



Public Hearing Trustee Area Map Options

September 3, 2025

Jonathan Salt, *F3 Law*
David Lopez, *WSSC*

What is the California Voting Rights Act (“CVRA”)?



- Took effect January 1, 2003
- Prohibits the use of “at-large” elections when such an election system:

“impairs the ability of a protected class to elect candidates of its choice or its ability to influence the outcome of an election....”

(Elections Code §14027.)

What is a “protected class?”



- A class of voters who are members of a ***race, color, or language minority group***, as this class is referenced and defined in the federal Voting Rights Act of 1965 (52 U.S.C. Sec. 10301 et seq.).

(Elections Code §14026(d).)

What is a “By-Trustee Area” Election System

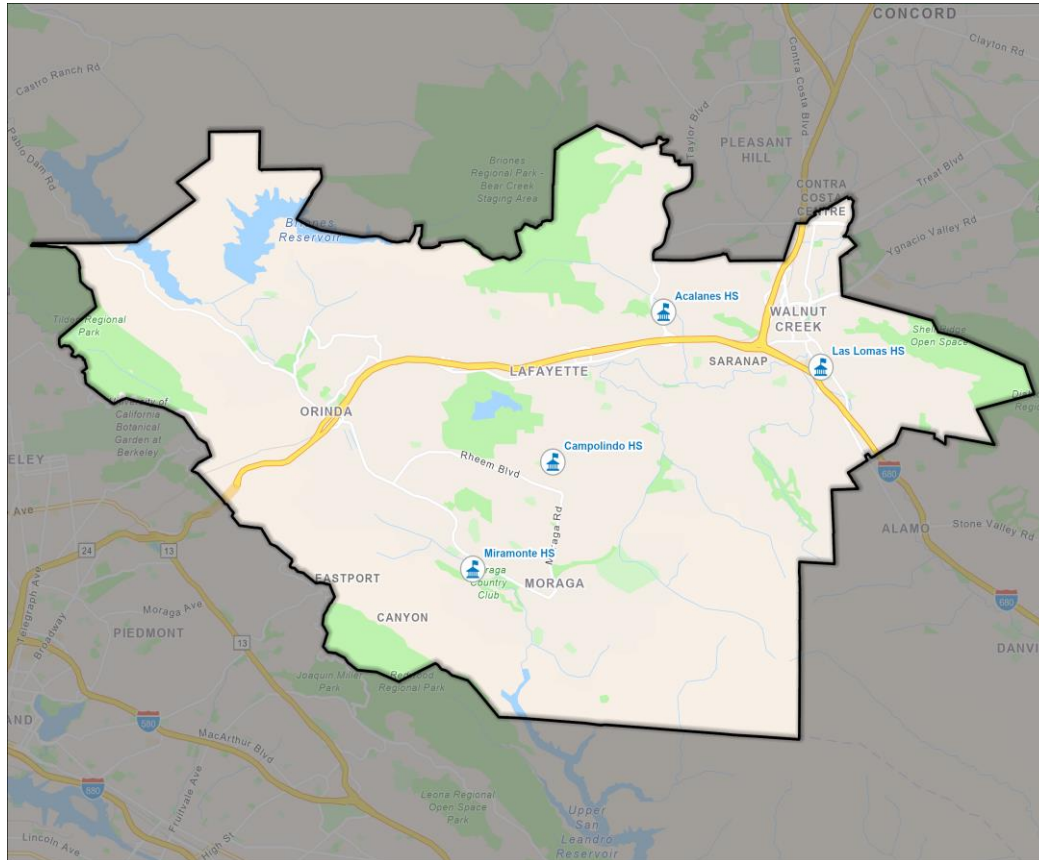
- *Only safe harbor from a CVRA claim*
- School district is divided into trustee areas
- A governing board member is elected from each trustee area
- Board members are elected ***by only the registered voters in the particular trustee area*** where the governing board member resides

Keep in mind...

- With a total population of **119,039**, each Trustee Area will **include *approximately 23,808 people***.
- The difference between the largest and smallest trustee areas can be no more than 2,380 people.
- Census Blocks vary significantly in shape, size, and population totals – approximately 1,100 Census blocks in the District.
- Census Blocks generally are not to be “split” with a Trustee Area boundary line – since we would lose the accuracy of the population balancing count.

District's Demographics

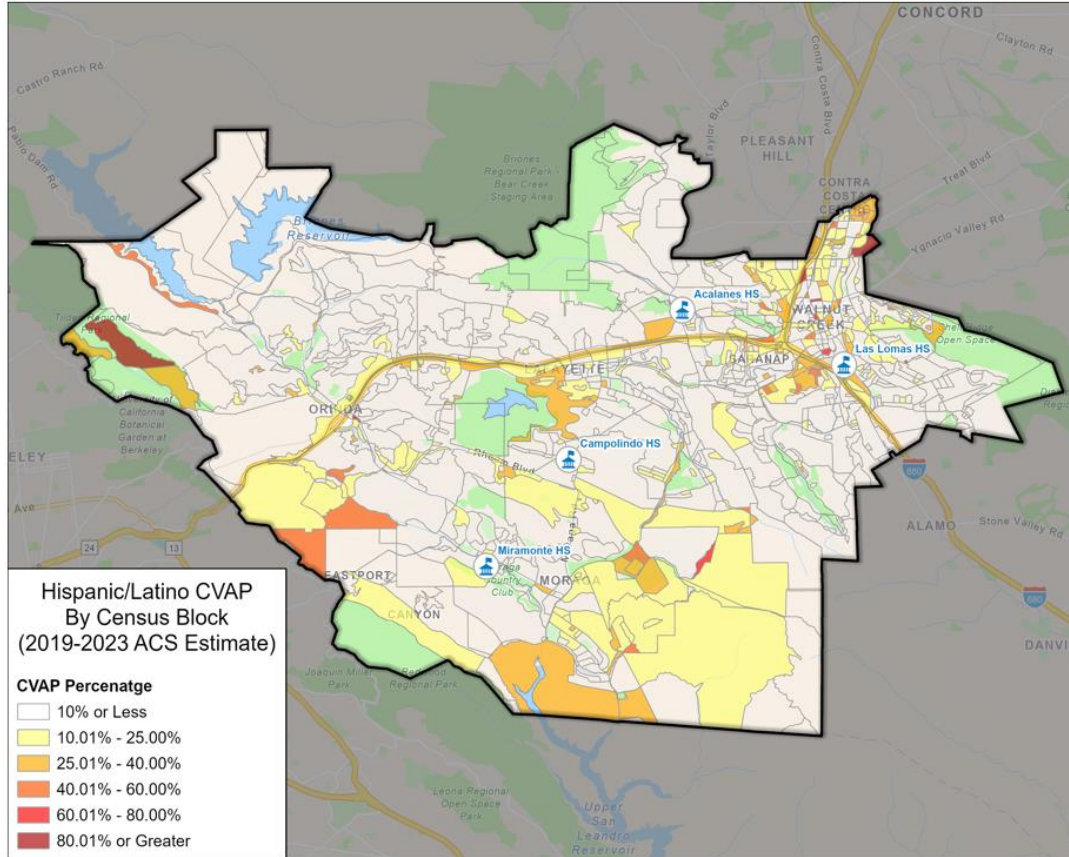
2020 Census Data (Total Population)



Population	Total Population		Age 18 +	
	Total	%	Total	%
Hispanic/Latino	10,870	9.1%	7,814	8.2%
White	79,149	66.5%	66,087	69.4%
Black/ African American	1,872	1.6%	1,549	1.6%
American Indian/Alaska Native	116	0.1%	100	0.1%
Asian	18,211	15.3%	14,665	15.4%
Native Hawaiian/ Pacific Islander	169	0.1%	148	0.2%
Other	740	0.6%	542	0.6%
Two or More Races	7,912	6.6%	4,313	4.5%
Total Population	119,039	100%	95,218	100%

District's Demographics

Hispanic Citizen Voting Age Population Estimates

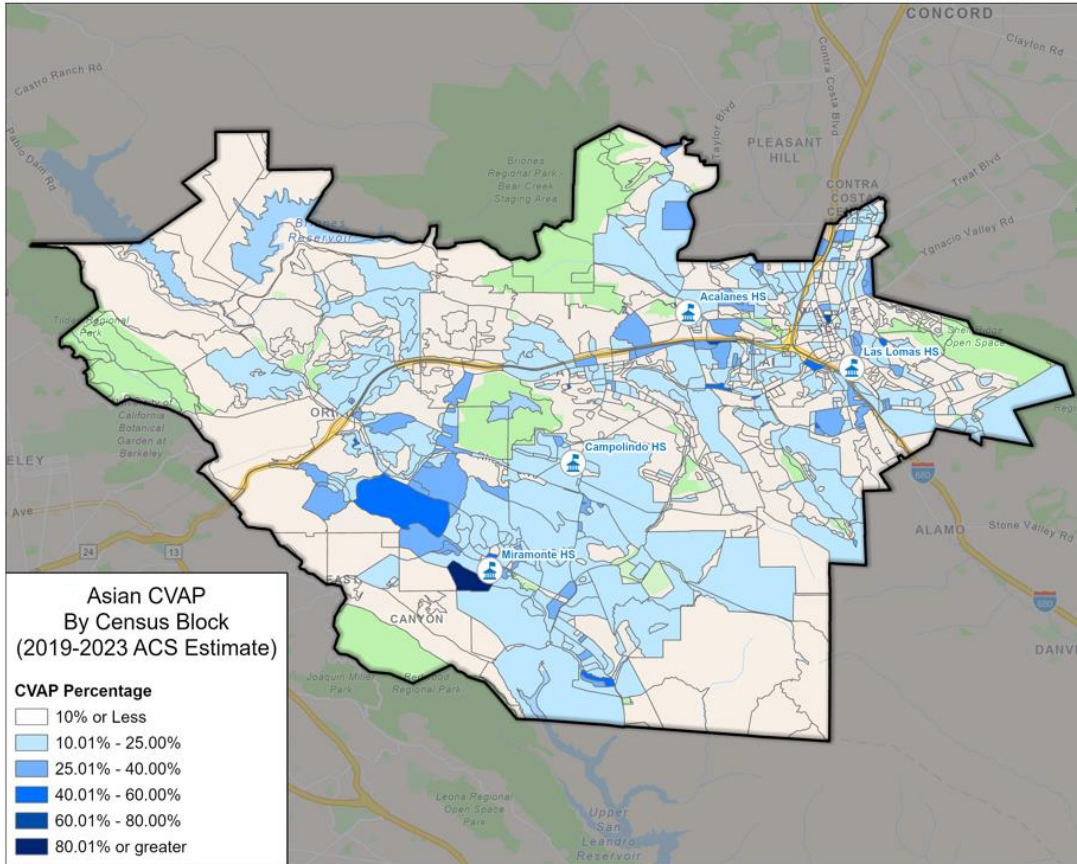


Population	2019-2023 ^[1]	
	Total	%
Hispanic/Latino	7,258	8.3%
White	64,173	73.3%
Black/ African American	1,545	1.8%
American Indian/Alaska Native	146	0.2%
Asian	11,155	12.7%
Native Hawaiian/ Pacific Islander	75	0.1%
Two or More Races	3,219	3.7%
Total Population	87,571	100%

^[1] CVAP data taken from the California Statewide Database which provides the 2019-2023 American Community Survey CVAP estimates with DOJ by 2020 Census blocks and adjustment to reallocate incarcerated persons to their last known residential address.

District's Demographics

Asian Citizen Voting Age Population Estimates

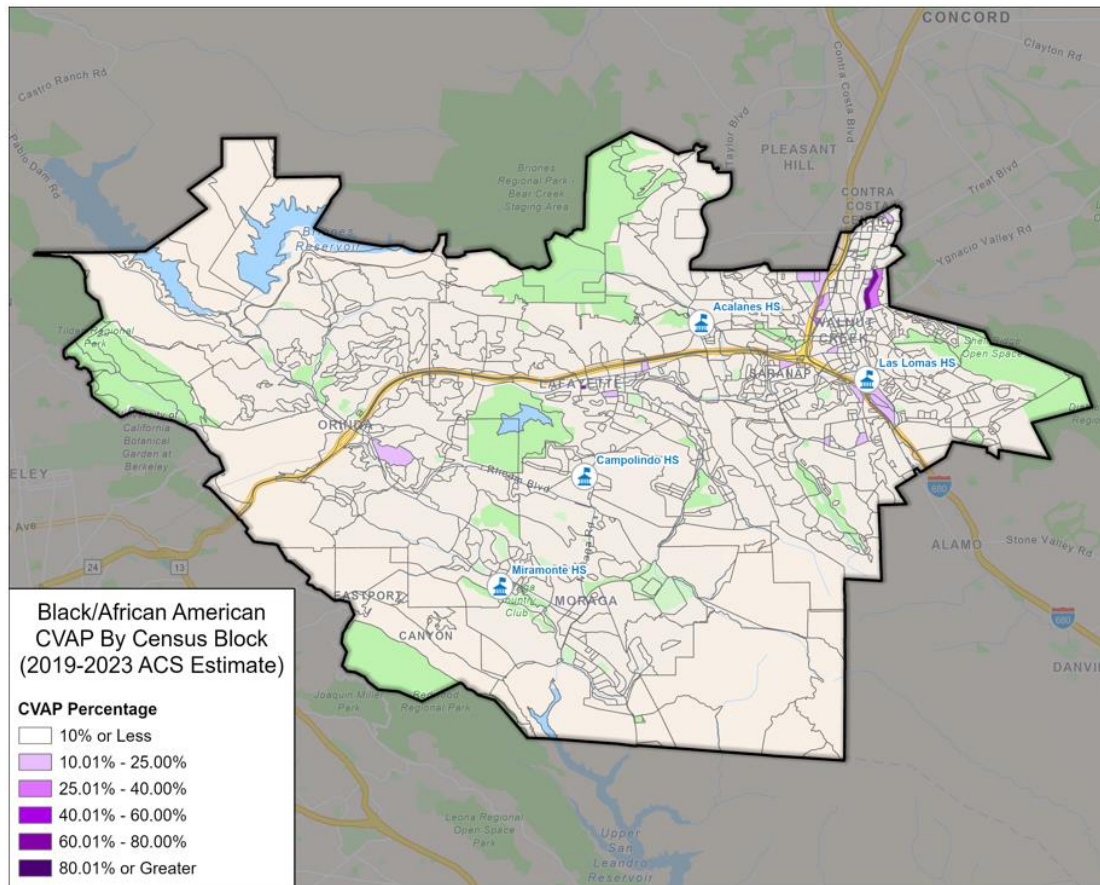


Population	2019-2023 ^[1]	
	Total	%
Hispanic/Latino	7,258	8.3%
White	64,173	73.3%
Black/ African American	1,545	1.8%
American Indian/Alaska Native	146	0.2%
Asian	11,155	12.7%
Native Hawaiian/ Pacific Islander	75	0.1%
Two or More Races	3,219	3.7%
Total Population	87,571	100%

^[1] CVAP data taken from the California Statewide Database which provides the 2019-2023 American Community Survey CVAP estimates with DOJ by 2020 Census blocks and adjustment to reallocate incarcerated persons to their last known residential address.

District's Demographics

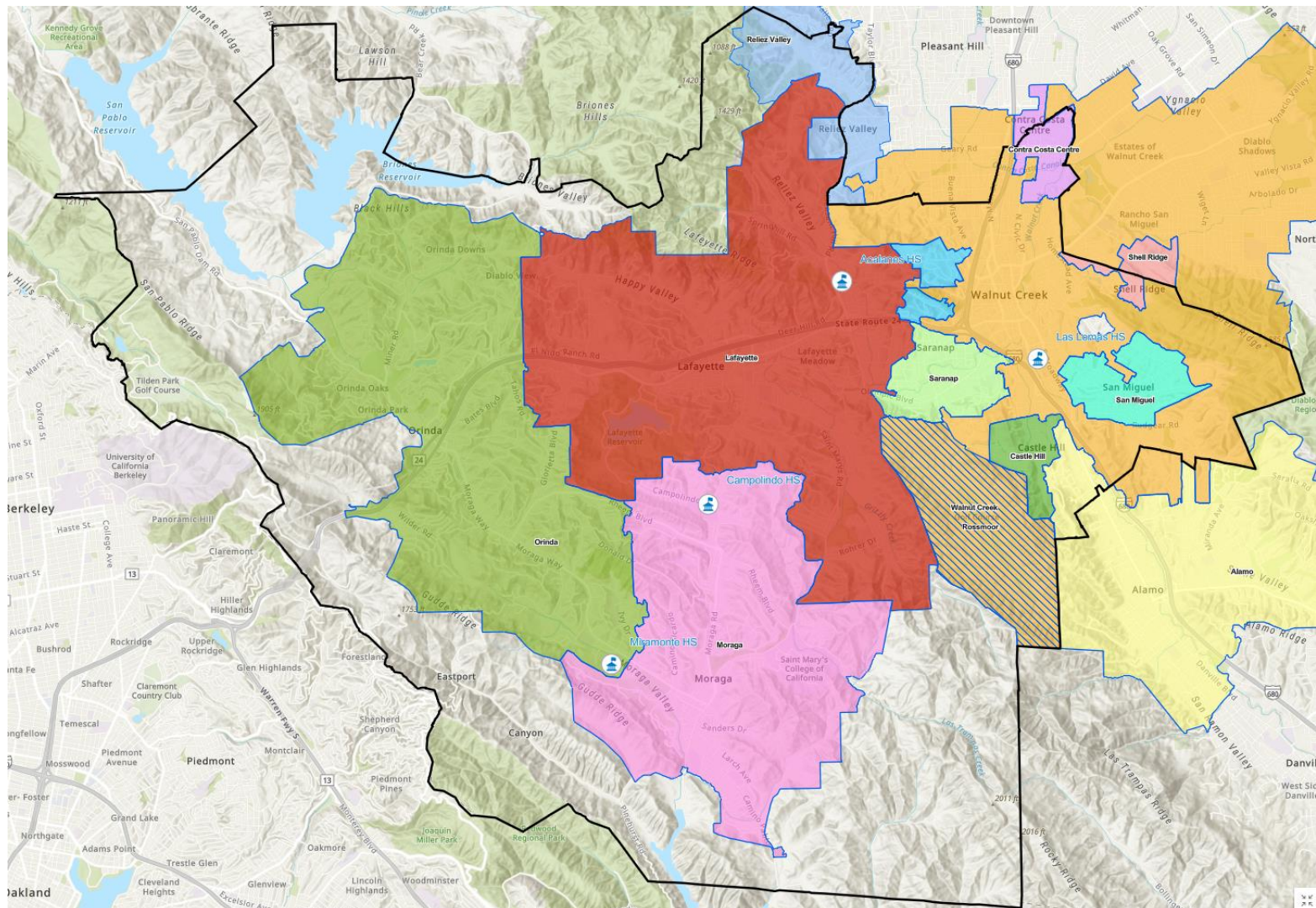
Black Citizen Voting Age Population Estimates



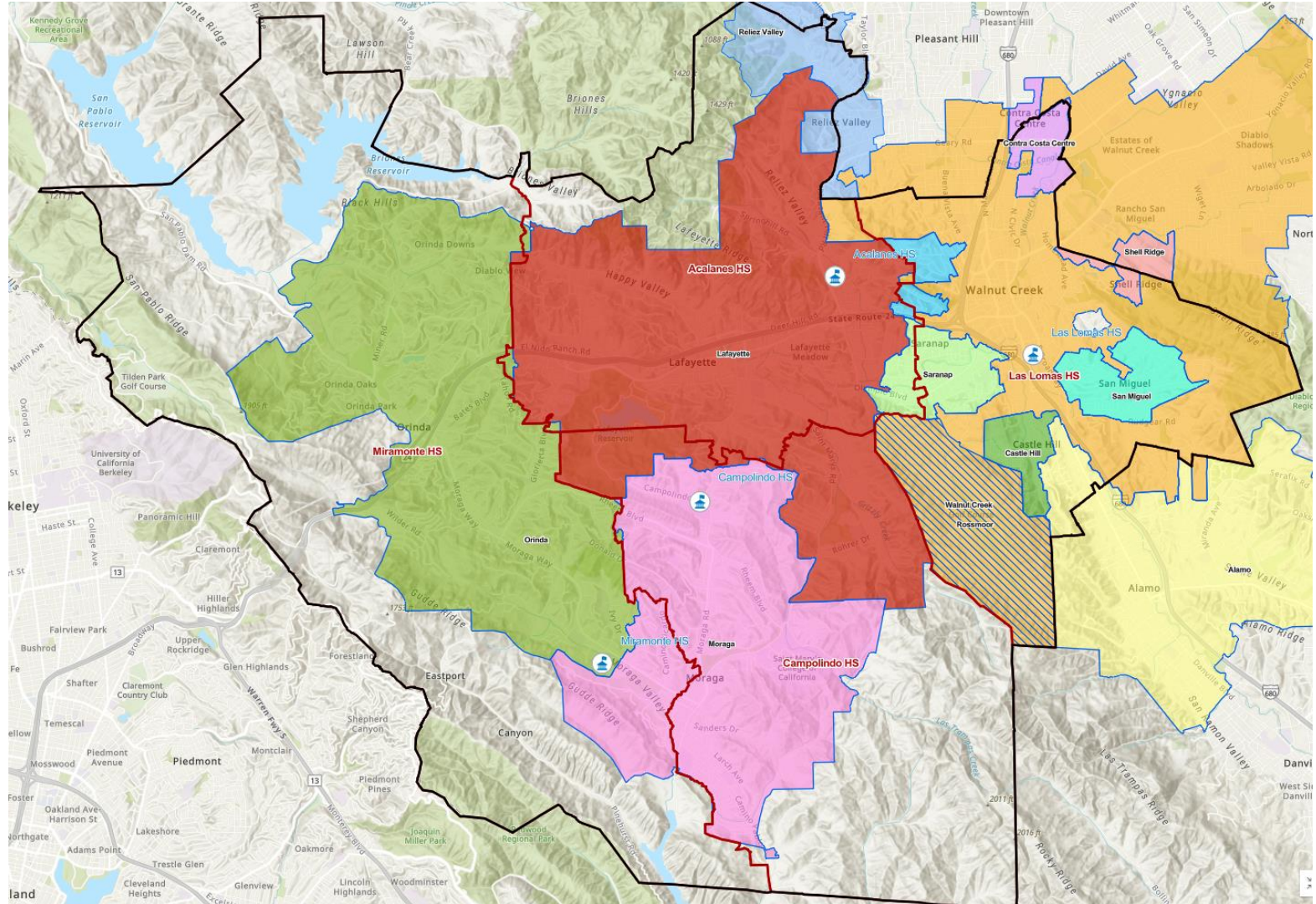
Population	2019-2023 ^[1]	
	Total	%
Hispanic/Latino	7,258	8.3%
White	64,173	73.3%
Black/ African American	1,545	1.8%
American Indian/Alaska Native	146	0.2%
Asian	11,155	12.7%
Native Hawaiian/ Pacific Islander	75	0.1%
Two or More Races	3,219	3.7%
Total Population	87,571	100%

^[1] CVAP data taken from the California Statewide Database which provides the 2019-2023 American Community Survey CVAP estimates with DOJ by 2020 Census blocks and adjustment to reallocate incarcerated persons to their last known residential address.

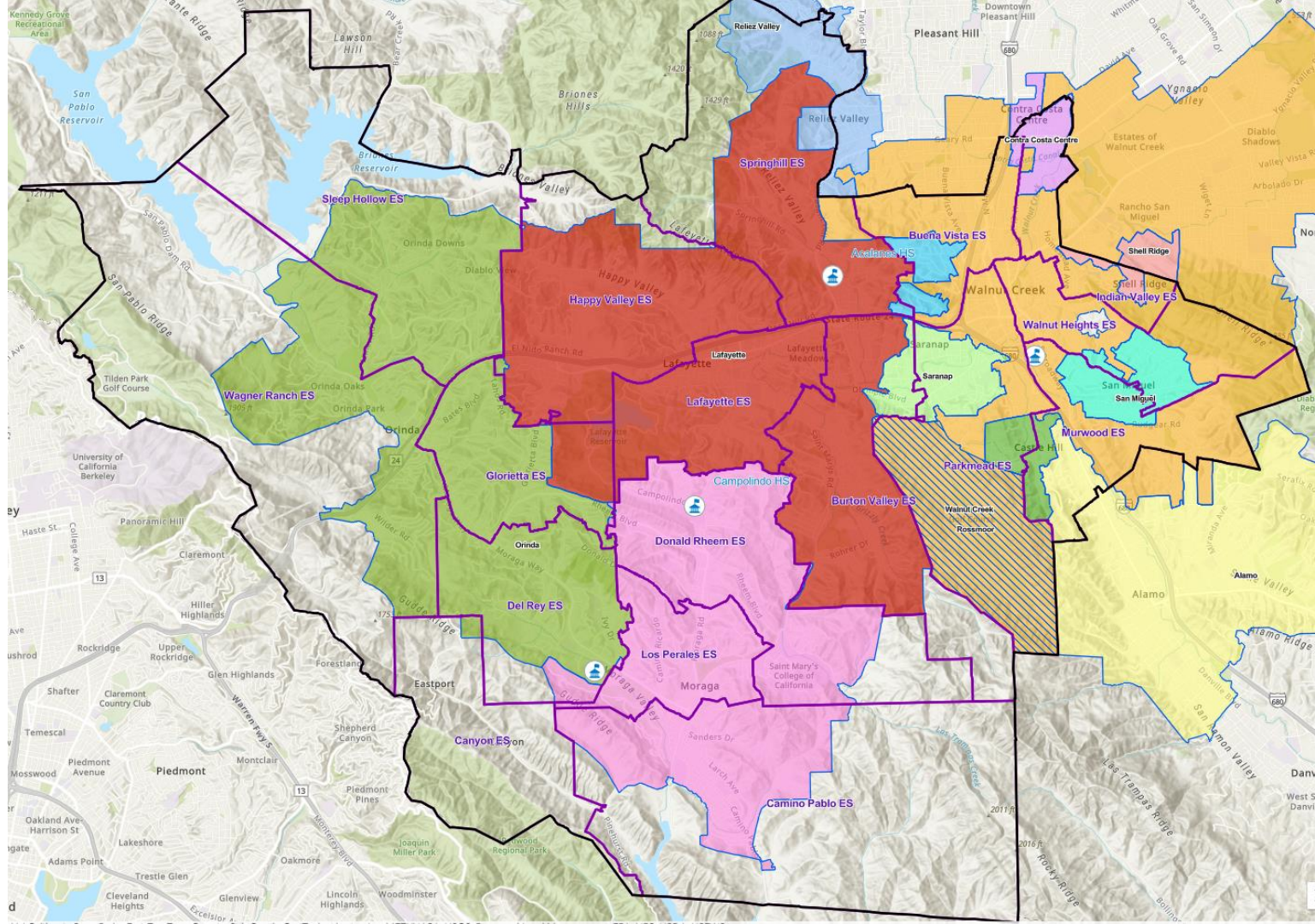
Cities, CDPs



Cities, CDPs, & HS Areas



Cities, CDPs, & ES Areas



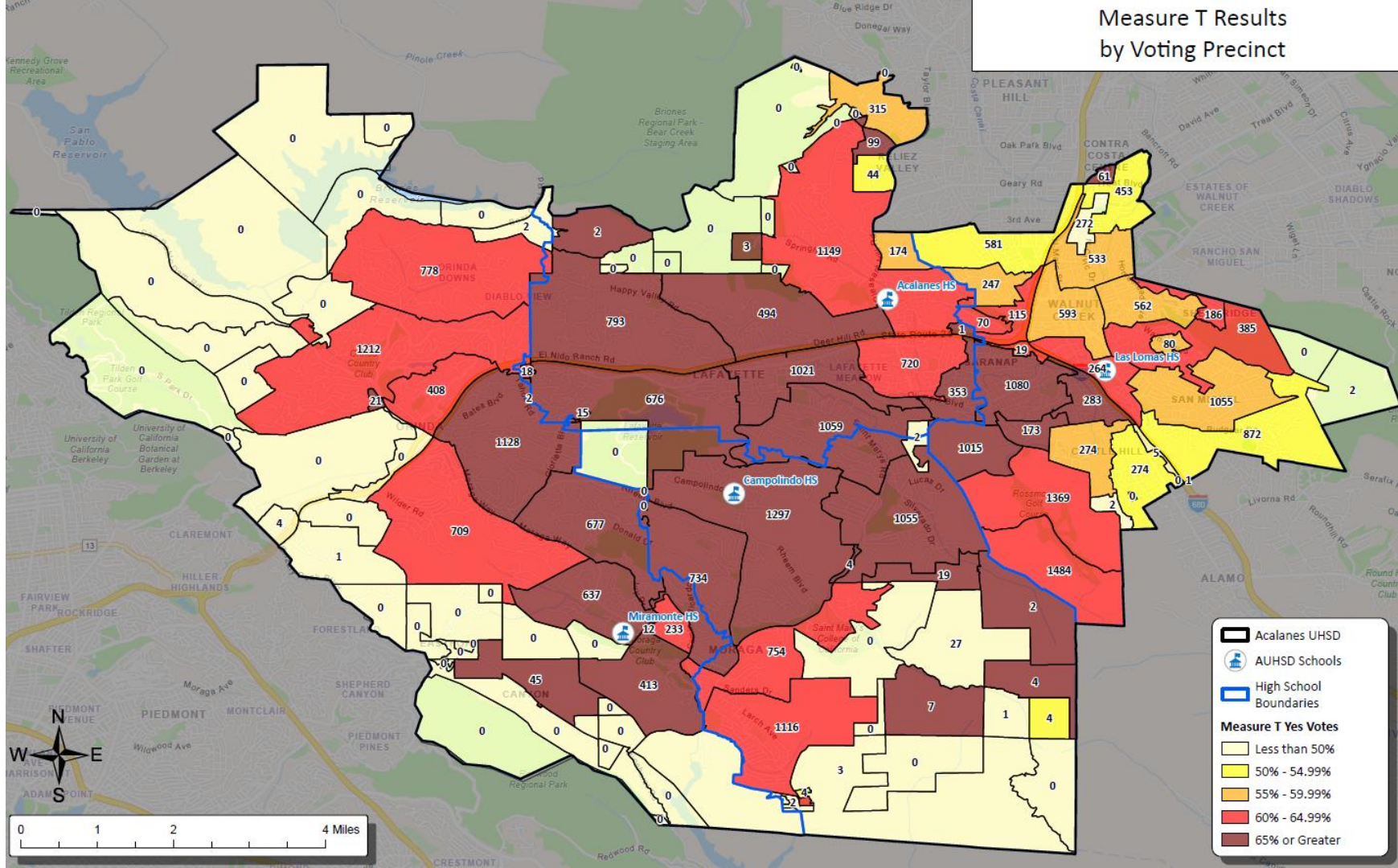
Summary/Recap of Pre-Map Stage



■ Feedback:

- Elementary School sites are Communities of Interest ("CoI")
- Rossmoor is a CoI
- Buena Vista/Downtown Walnut Creek is a CoI
- Northeast portion: N. Main, apartments/condos along BART tracks
- Income (ensure lower income areas are being represented as much as higher income areas)
- Consider supporters of special education
- Consider those who voted in support of school bonds/parcel taxes
- Cross HS school boundaries to avoid balkanization/silos
- All trustees are accountable to all schools

Measure T Results by Voting Precinct



District Student Special Education/504 Data per Map Option

Trustee Area	Option 1	Option 2	Option 3	Option 4
	% Share	% Share	% Share	% Share
Trustee Area No. 1	13.2%	13.1%	16.7%	14.0%
Trustee Area No. 2	9.6%	10.6%	14.8%	14.9%
Trustee Area No. 3	25.3%	24.5%	16.8%	18.4%
Trustee Area No. 4	22.1%	23.4%	23.2%	22.1%
Trustee Area No. 5	27.2%	25.9%	25.9%	28.0%
Out of District	2.6%	2.6%	2.6%	2.6%
Total Population	100.0%	100.0%	100.0%	100.0%

Current Step: Draft Maps



- Draw Draft Trustee Area Plans
 - Demographer to use 2020 Census Data and additionally permitted updated data.
 - Population must be as equal “as is practicable” – people, not citizens.
 - Ed Code section 1002: “...trustee areas shall be as nearly equal in population...”
 - A certain amount of deviation (10%) may be permitted.

Criteria for Consideration



- Comply with the U.S. Constitution.
- Comply with the California Constitution.
- **Population Balance:**
 - Each area shall contain nearly equal number of inhabitants
- **Comply with the Federal Voting Rights Act:**
 - Determine whether it is possible to create an election district or districts in which a minority group is sufficiently large and geographically compact to constitute a majority in a single-member district.

Criteria for Consideration

AB 764 / Elections Code § 21130



Order of priority:

- ❑ Contiguous
- ❑ Local Neighborhoods/Communities of Interest
- ❑ City/Census designated places
- ❑ Natural/artificial boundaries
- ❑ Geographical compactness

Other Criteria for Consideration:

- ❑ Other local considerations
- ❑ May not adopt boundaries for the purpose of favoring/discriminating against an incumbent, political candidate or political party.

The Map Options - Background



- Each map was randomly assigned a number as a name (i.e., "Option 1," "Option 2," etc.)
- The number name of the map has nothing to do with the numbers of each trustee area on each map.
- Each map option has 5 balanced Trustee Areas.
- On each map:
 - Trustee Area 1 is shaded in **YELLOW**
 - Trustee Area 2 is shaded in **GREEN**
 - Trustee Area 3 is shaded in **RED**
 - Trustee Area 4 is shaded in **BLUE**
 - Trustee Area 5 is shaded in **PURPLE**

Map Option 1

Election Sequencing
 Area 1 – 2026
 Area 2 – 2026
 Area 3 – 2028
 Area 4 – 2028
 Area 5 – 2026

Legend:
 Acalanes UHSD
 AUHSD Schools
Proposed Trustee Areas
 Trustee Area No. 1
 Trustee Area No. 2
 Trustee Area No. 3
 Trustee Area No. 4
 Trustee Area No. 5

**Election
Sequencing**
Area 1 – 2026
Area 2 – 2026
Area 3 – 2028
Area 4 – 2028
Area 5 – 2026

**Election
Sequencing**
Area 1 – 2026
Area 2 – 2026
Area 3 – 2028
Area 4 – 2028
Area 5 – 2026

**Election
Sequencing**
Area 1 – 2026
Area 2 – 2026
Area 3 – 2028
Area 4 – 2028
Area 5 – 2026

**Election
Sequencing**
Area 1 – 2026
Area 2 – 2026
Area 3 – 2028
Area 4 – 2028
Area 5 – 2026

**Election
Sequencing**
Area 1 – 2026
Area 2 – 2026
Area 3 – 2028
Area 4 – 2028
Area 5 – 2026

**Election
Sequencing**
Area 1 – 2026
Area 2 – 2026
Area 3 – 2028
Area 4 – 2028
Area 5 – 2026

Acalanes UHSD
 AUHSD Schools
Proposed Trustee Areas
 Trustee Area No. 1
 Trustee Area No. 2
 Trustee Area No. 3
 Trustee Area No. 4
 Trustee Area No. 5

Acalanes UHSD
 AUHSD Schools
Proposed Trustee Areas
 Trustee Area No. 1
 Trustee Area No. 2
 Trustee Area No. 3
 Trustee Area No. 4
 Trustee Area No. 5

Acalanes UHSD
 AUHSD Schools
Proposed Trustee Areas
 Trustee Area No. 1
 Trustee Area No. 2
 Trustee Area No. 3
 Trustee Area No. 4
 Trustee Area No. 5

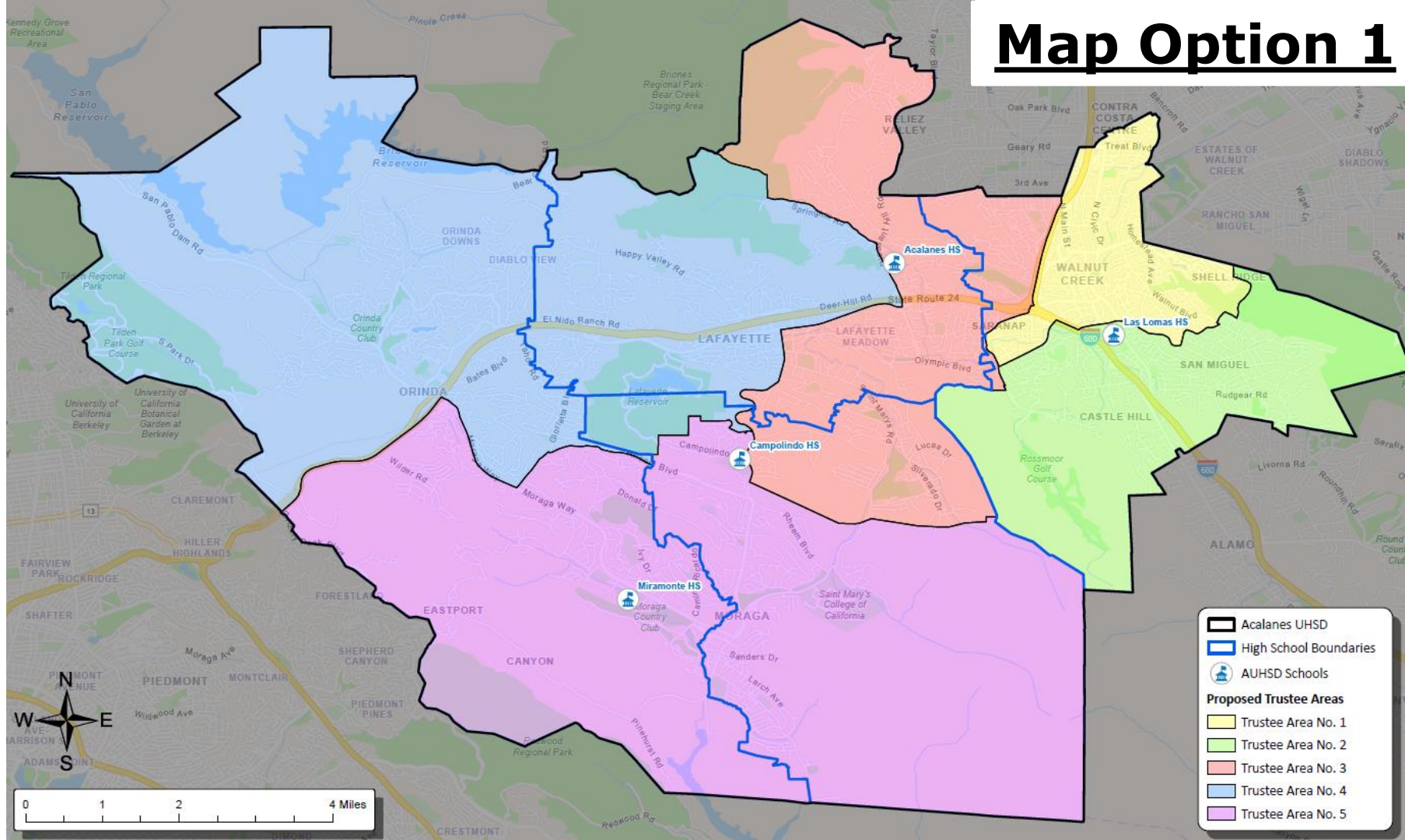
Acalanes UHSD
 AUHSD Schools
Proposed Trustee Areas
 Trustee Area No. 1
 Trustee Area No. 2
 Trustee Area No. 3
 Trustee Area No. 4
 Trustee Area No. 5

Acalanes UHSD
 AUHSD Schools
Proposed Trustee Areas
 Trustee Area No. 1
 Trustee Area No. 2
 Trustee Area No. 3
 Trustee Area No. 4
 Trustee Area No. 5

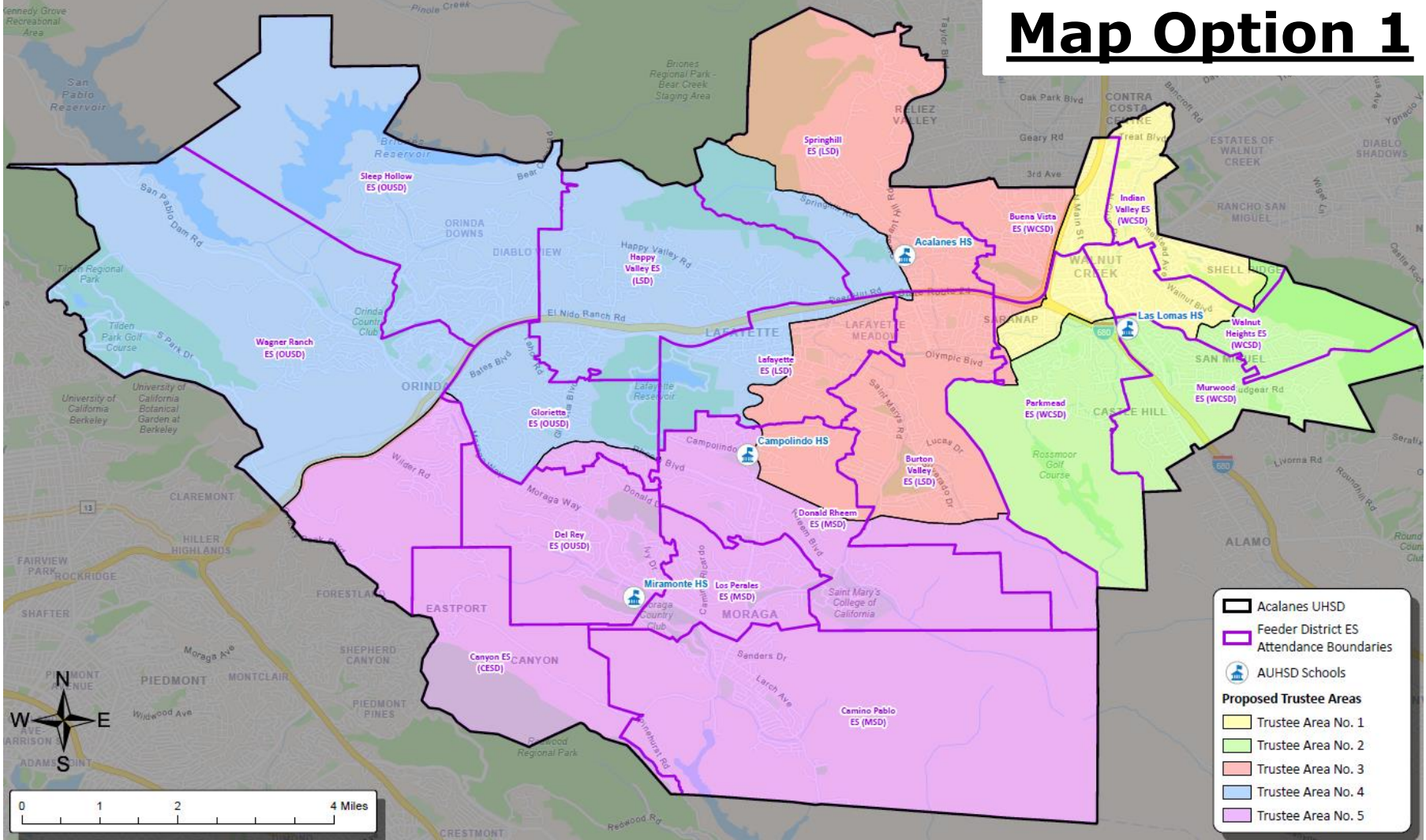
Acalanes UHSD
 AUHSD Schools
Proposed Trustee Areas
 Trustee Area No. 1
 Trustee Area No. 2
 Trustee Area No. 3
 Trustee Area No. 4
 Trustee Area No. 5

Acalanes UHSD
 AUHSD Schools
Proposed Trustee Areas
 Trustee Area No. 1
 Trustee Area No. 2
 Trustee Area No. 3
 Trustee Area No. 4
 Trustee Area No. 5

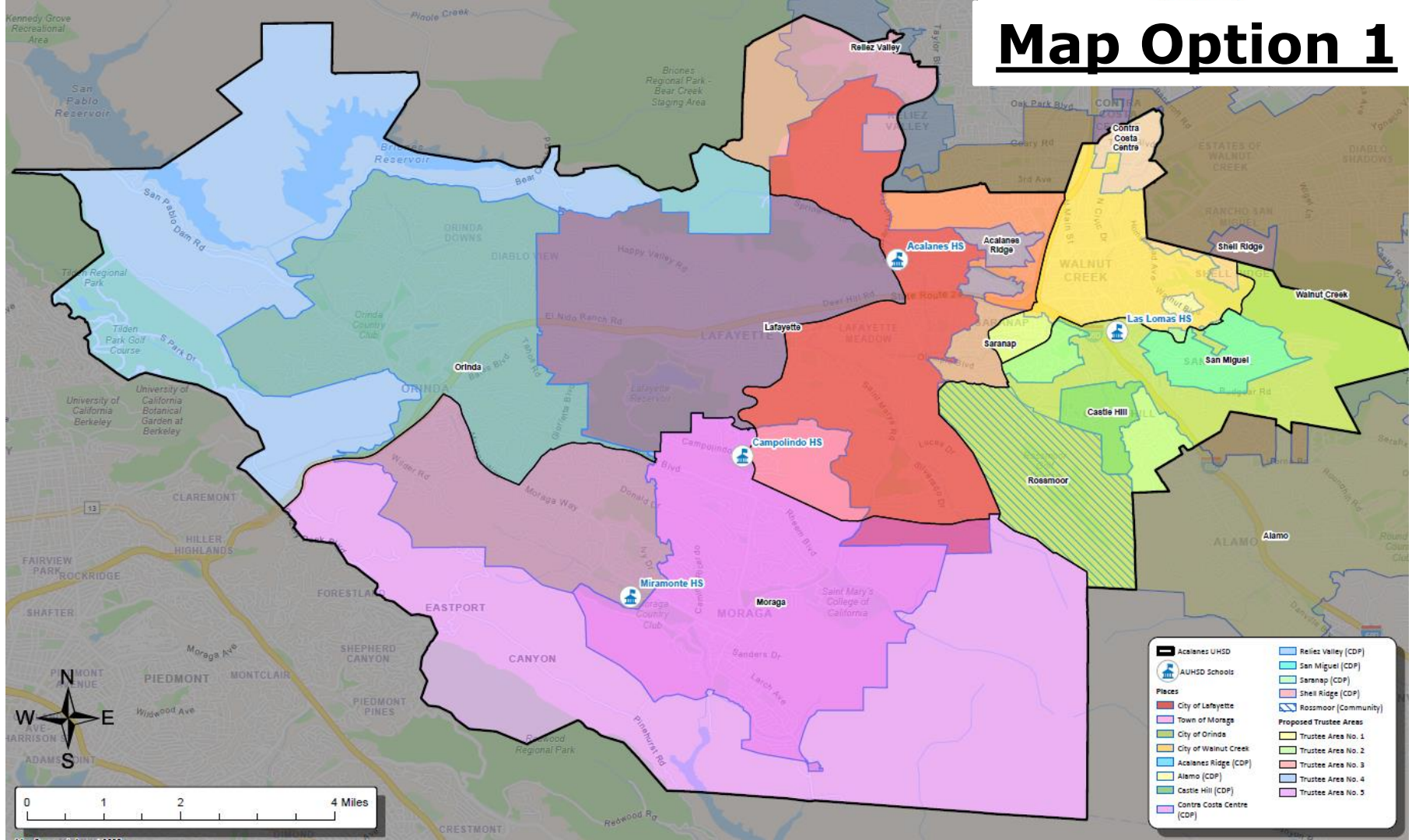
Map Option 1



Map Option 1



Map Option 1



Map 1 – Total Population Data



F3 Law

Total Population:	119,039	Ideal Population:	23,808	Variance:	3.1%
Total Population (2020 Census)					
	Trustee Area 1	Trustee Area 2	Trustee Area 3	Trustee Area 4	Trustee Area 5
Population	23,786	24,182	23,880	23,445	23,746
Population Variance	-22	374	72	-363	-62
	-0.1%	1.6%	0.3%	-1.5%	-0.3%
Hispanic/Latino	12.9%	7.7%	8.6%	7.3%	9.1%
White	58.8%	72.3%	69.3%	69.6%	62.3%
Black/ African American	3.2%	1.7%	1.0%	0.8%	1.2%
American Indian/ Alaska Native	0.2%	0.1%	0.1%	0.1%	0.1%
Asian	17.3%	13.1%	12.8%	14.4%	18.8%
Native Hawaiian/ Other Pacific Islander	0.2%	0.2%	0.1%	0.1%	0.2%
Other	0.8%	0.5%	0.6%	0.6%	0.6%
Two or More Races	6.5%	4.5%	7.5%	7.0%	7.6%

Map 1 – CVAP Data



Citizens by Voting Age Population Estimate (2019-2023)

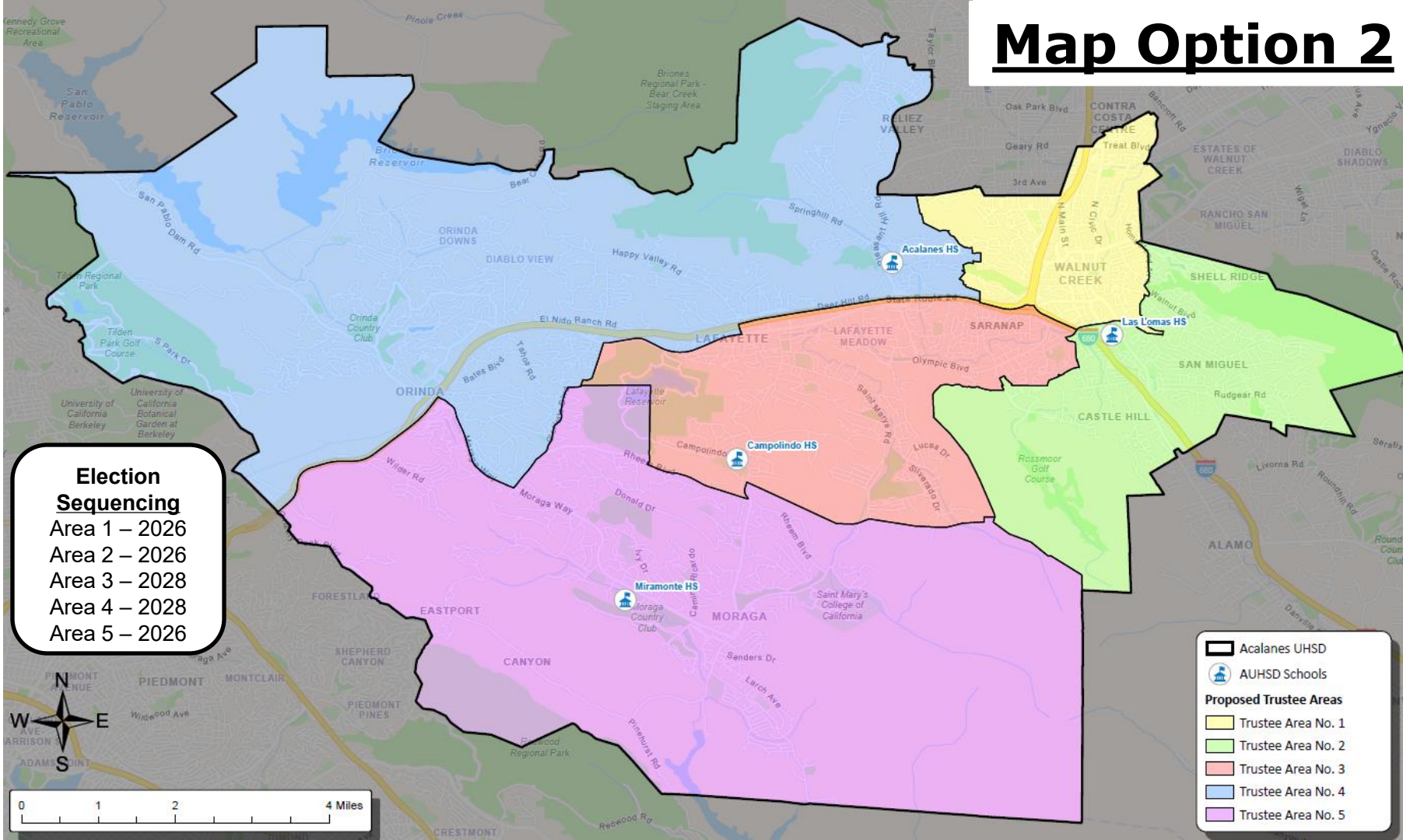
	Trustee Area 1	Trustee Area 2	Trustee Area 3	Trustee Area 4	Trustee Area 5
Population	17,750	19,444	17,242	16,469	16,666
Hispanic/Latino	12.2%	6.3%	7.4%	6.3%	9.3%
White	67.3%	78.1%	75.9%	76.8%	67.9%
Black/ African American	3.0%	2.1%	1.8%	1.1%	0.7%
American Indian/ Alaska Native	0.3%	0.1%	0.2%	0.0%	0.3%
Asian	13.0%	10.2%	11.2%	11.2%	18.4%
Native Hawaiian/ Other Pacific Islander	0.1%	0.1%	0.0%	0.0%	0.2%
Other	N/A	N/A	N/A	N/A	N/A
Two or More Races	4.1%	3.1%	3.4%	4.6%	3.2%

Map 1 – Income Data

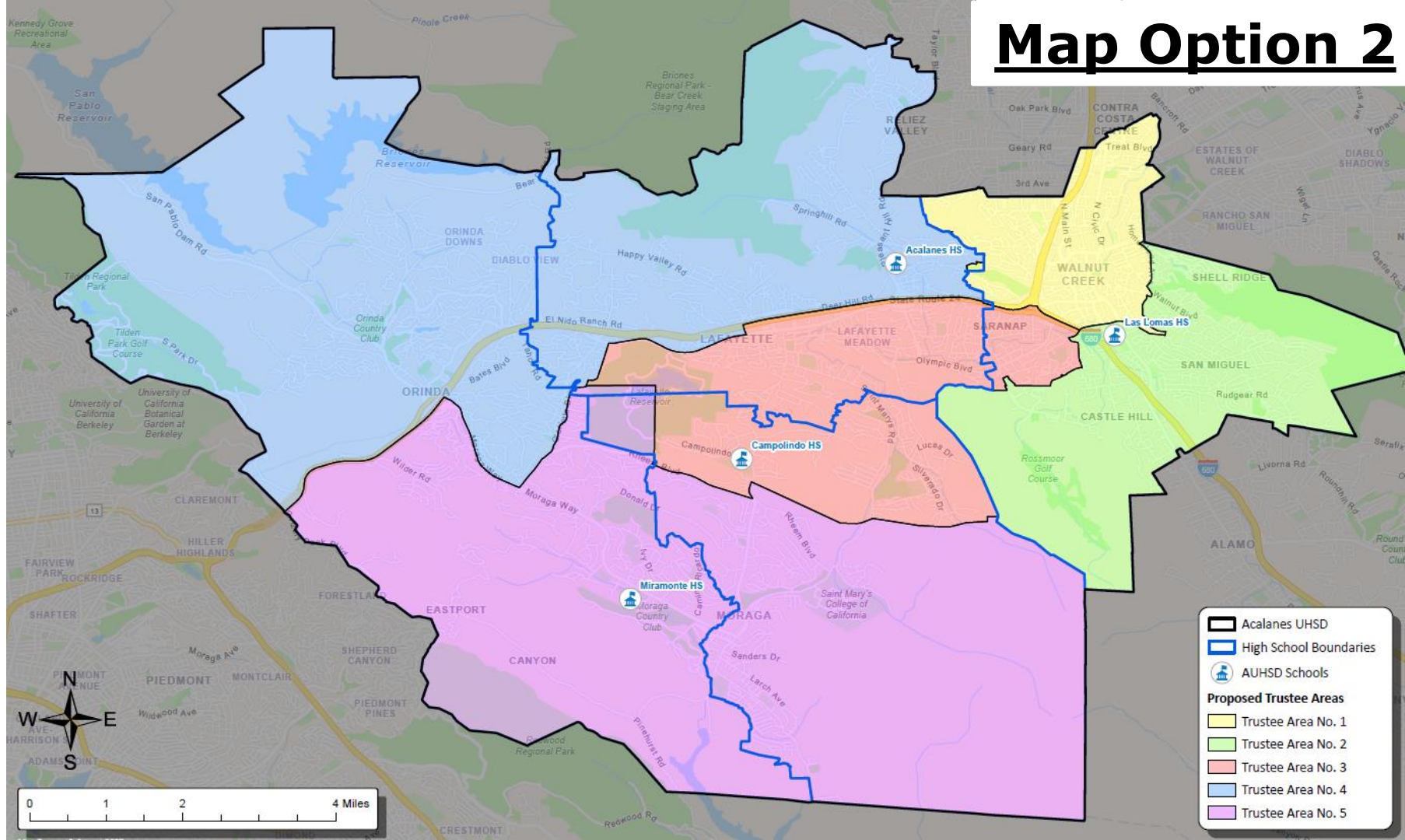


Household Income (2019-2023)					
	Trustee Area 1	Trustee Area 2	Trustee Area 3	Trustee Area 4	Trustee Area 5
Income Less Than \$20K	7.0%	3.6%	4.7%	5.4%	6.5%
Income \$20K - \$50K	9.2%	11.4%	7.9%	6.4%	5.2%
Income \$50K - \$75K	7.6%	8.2%	4.7%	5.1%	5.9%
Income \$75K - \$100K	10.5%	10.8%	7.3%	3.5%	5.5%
Income \$100K - \$200K	35.4%	27.2%	25.5%	20.9%	23.9%
Income Over \$200K	30.3%	38.8%	49.9%	58.7%	53.1%



Map Option 2



Map Option 2








[illegible]

 Acalanes UHSD
 Feeder District ES
 Attendance Boundaries

 AUHSD Schools

Proposed Trustee Areas

-  Trustee Area No. 1
 Trustee Area No. 2
 Trustee Area No. 3
 Trustee Area No. 4
 Trustee Area No. 5



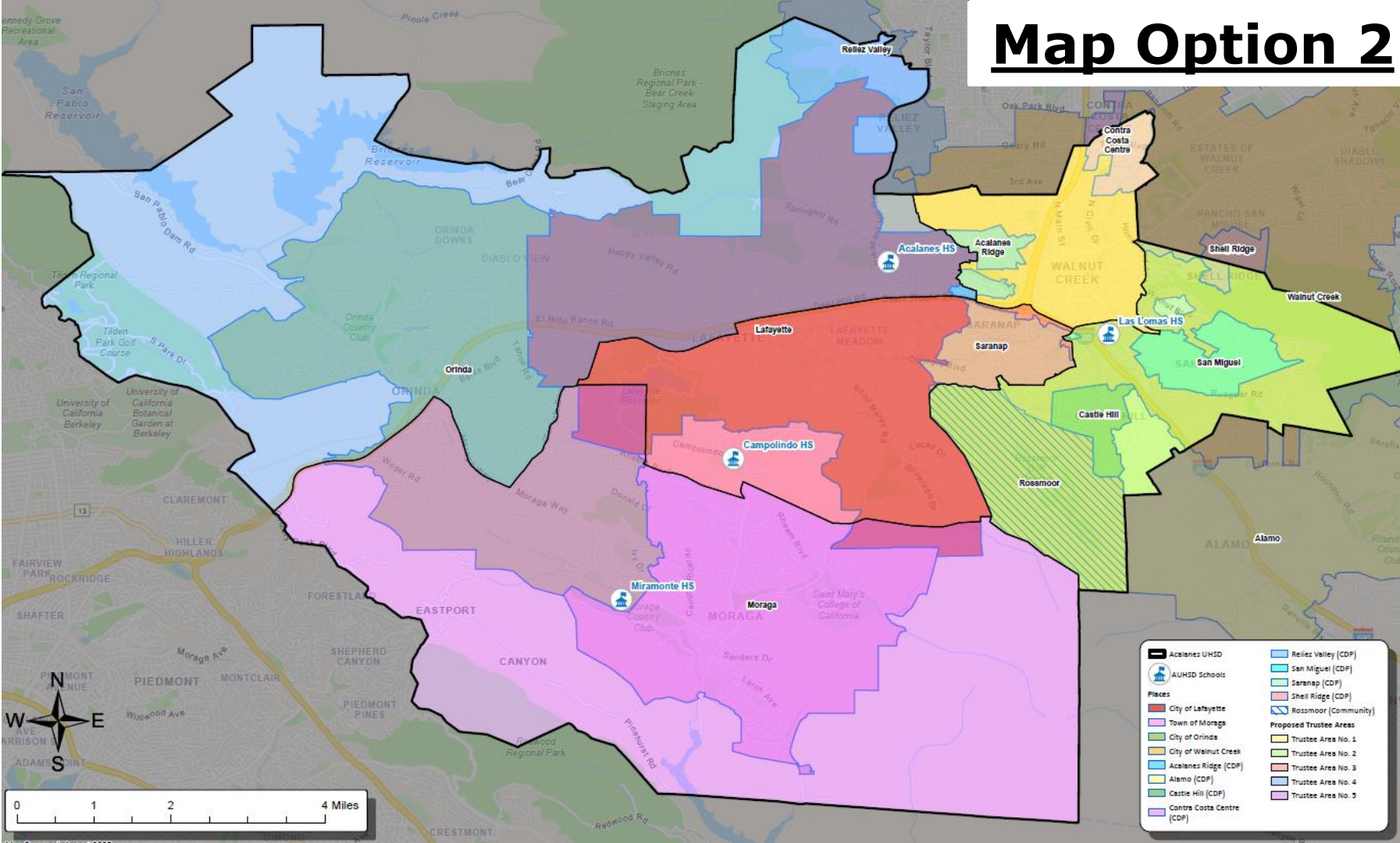
0 1 2 4 Miles

Map Option 2

This map illustrates the proposed trustee areas for the Acalanes Unified School District. The district is divided into five trustee areas, each color-coded: Trustee Area No. 1 (light blue), Trustee Area No. 2 (light green), Trustee Area No. 3 (light orange), Trustee Area No. 4 (light purple), and Trustee Area No. 5 (light pink). The map also shows the locations of Acalanes UHSD, AUHSD Schools, and various places within the district, including Moraga, Lafayette, and Walnut Creek. A scale bar indicates distances up to 4 miles, and a north arrow is provided for orientation.

Legend:

- Acacanes UHSD
- AUHSD Schools
- Places
- City of Lafayette
- Town of Moraga
- City of Walnut Creek
- Acalanes Ridge (CDP)
- Alamo (CDP)
- Castle Hill (CDP)
- Contra Costa Centre (CDP)
- Reliez Valley (CDP)
- San Miguel (CDP)
- Saranap (CDP)
- Shell Ridge (CDP)
- Rossmoor (Community)
- Proposed Trustee Areas
- Trustee Area No. 1
- Trustee Area No. 2
- Trustee Area No. 3
- Trustee Area No. 4
- Trustee Area No. 5



Map 2 – Total Population Data



Total Population:		119,039	Ideal Population:		23,808	Variance:		8.7%			
Total Population (2020 Census)											
	Trustee Area 1		Trustee Area 2		Trustee Area 3		Trustee Area 4		Trustee Area 5		
Population		24,123		24,902		23,102		24,072		22,840	
Population Variance		315		1,094		-706		264		-968	
		1.3%		4.6%		-3.0%		1.1%		-4.1%	
Hispanic/Latino		13.0%		7.7%		9.2%		6.6%		9.3%	
White		57.6%		72.5%		68.7%		70.9%		62.5%	
Black/ African American		3.2%		1.7%		1.0%		0.7%		1.3%	
American Indian/ Alaska Native		0.2%		0.1%		0.1%		0.1%		0.1%	
Asian		18.4%		12.8%		13.0%		14.0%		18.5%	
Native Hawaiian/ Other Pacific Islander		0.2%		0.2%		0.1%		0.1%		0.2%	
Other		0.8%		0.5%		0.6%		0.6%		0.6%	
Two or More Races		6.7%		4.7%		7.4%		7.0%		7.6%	

Map 2 – CVAP Data



Citizens by Voting Age Population Estimate (2019-2023)

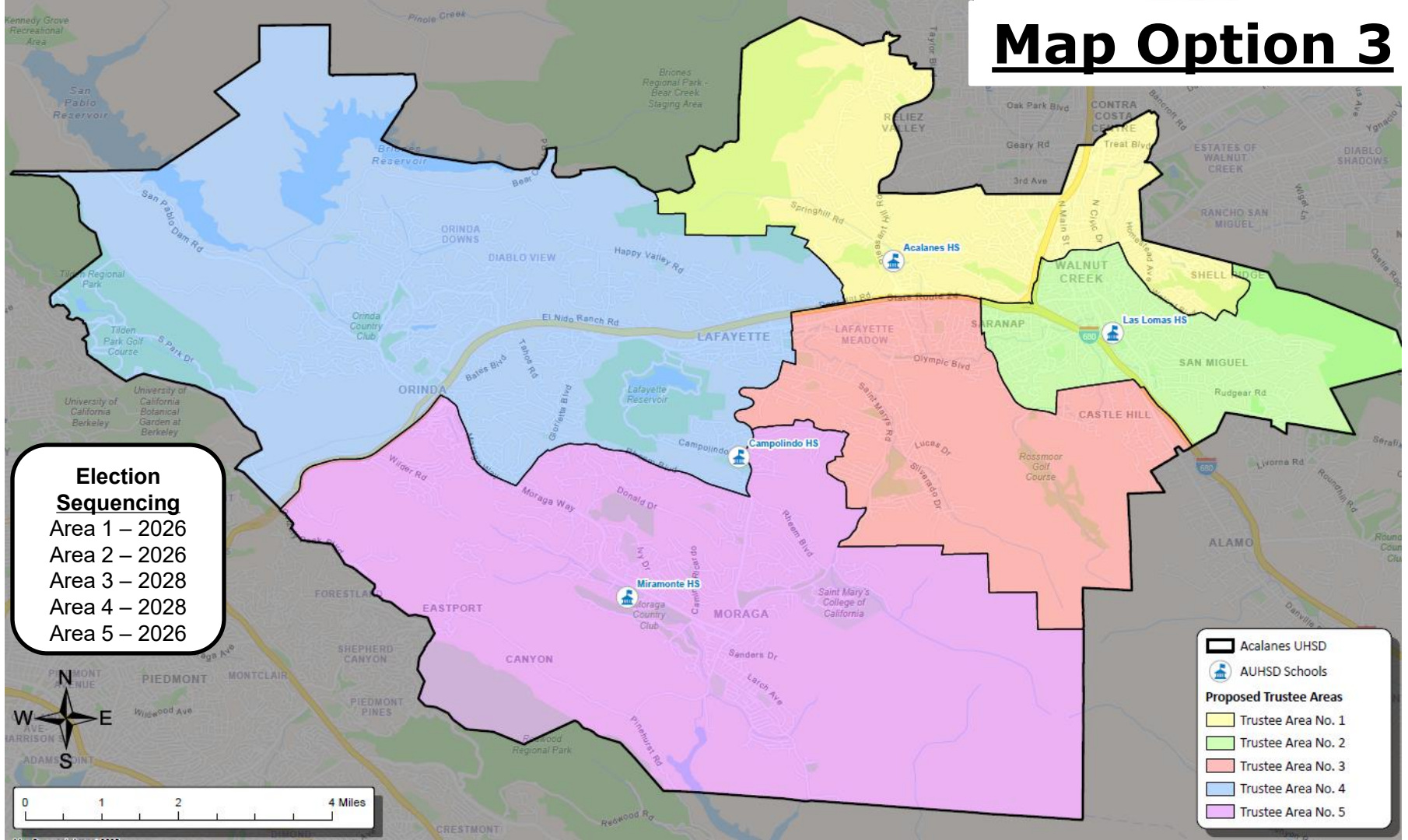
	Trustee Area 1	Trustee Area 2	Trustee Area 3	Trustee Area 4	Trustee Area 5
Population	18,685	19,690	15,810	17,449	15,937
Hispanic/Latino	13.1%	5.6%	8.1%	5.1%	9.7%
White	65.1%	79.2%	74.3%	79.8%	67.4%
Black/ African American	3.5%	2.1%	1.6%	0.6%	0.7%
American Indian/ Alaska Native	0.4%	0.1%	0.1%	0.0%	0.3%
Asian	13.9%	10.2%	11.0%	10.7%	18.6%
Native Hawaiian/ Other Pacific Islander	0.1%	0.1%	0.0%	0.0%	0.2%
Other	N/A	N/A	N/A	N/A	N/A
Two or More Races	4.0%	2.8%	4.9%	3.7%	3.1%

Map 2 – Income Data

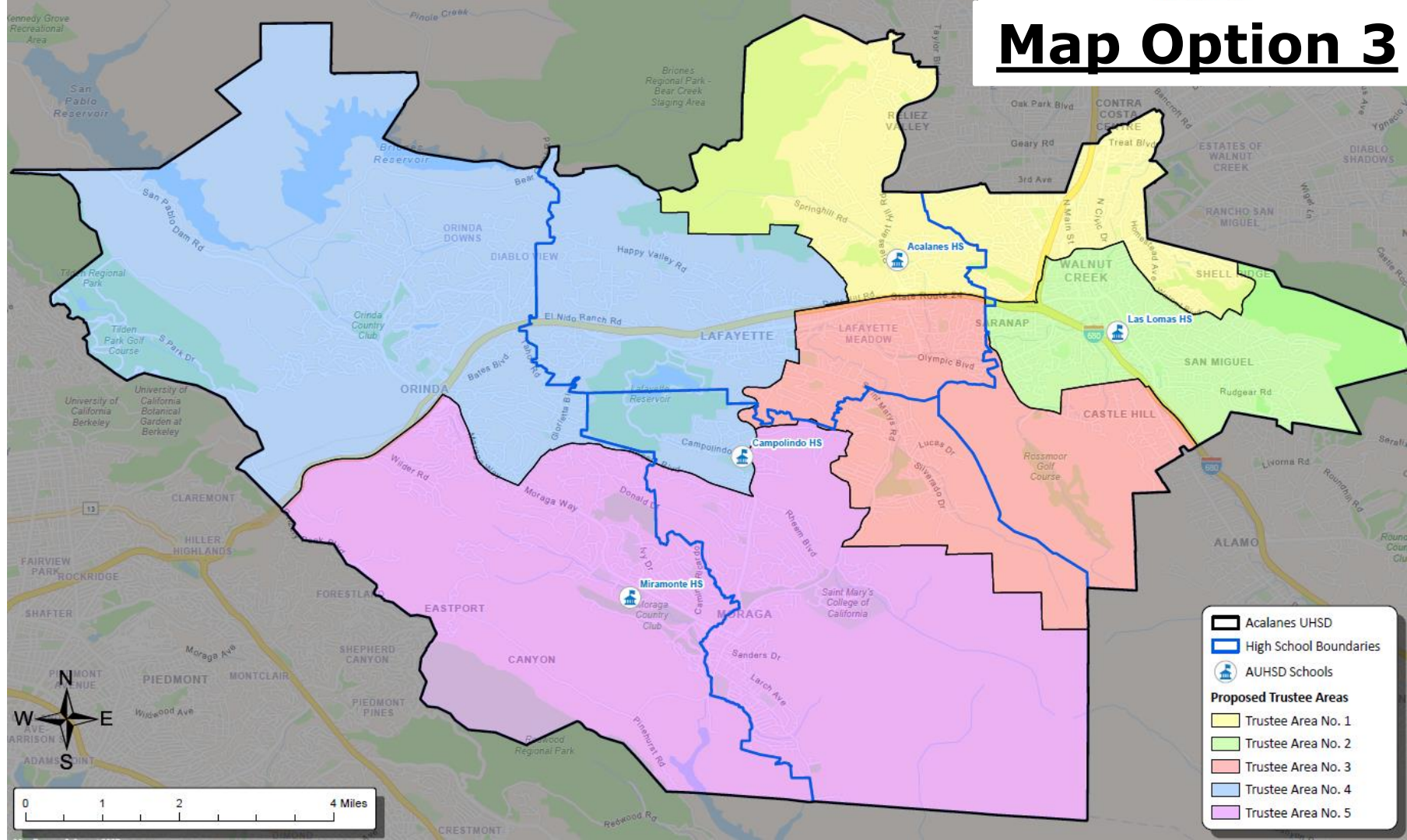


Household Income (2019-2023)					
	Trustee Area 1	Trustee Area 2	Trustee Area 3	Trustee Area 4	Trustee Area 5
Income Less Than \$20K	6.5%	4.1%	5.1%	5.4%	6.5%
Income \$20K - \$50K	11.5%	10.8%	6.7%	5.3%	5.5%
Income \$50K - \$75K	7.3%	7.8%	6.6%	4.6%	5.2%
Income \$75K - \$100K	9.7%	10.3%	8.1%	3.9%	5.3%
Income \$100K - \$200K	34.6%	27.9%	27.1%	19.6%	24.4%
Income Over \$200K	30.4%	39.2%	46.4%	61.2%	53.1%

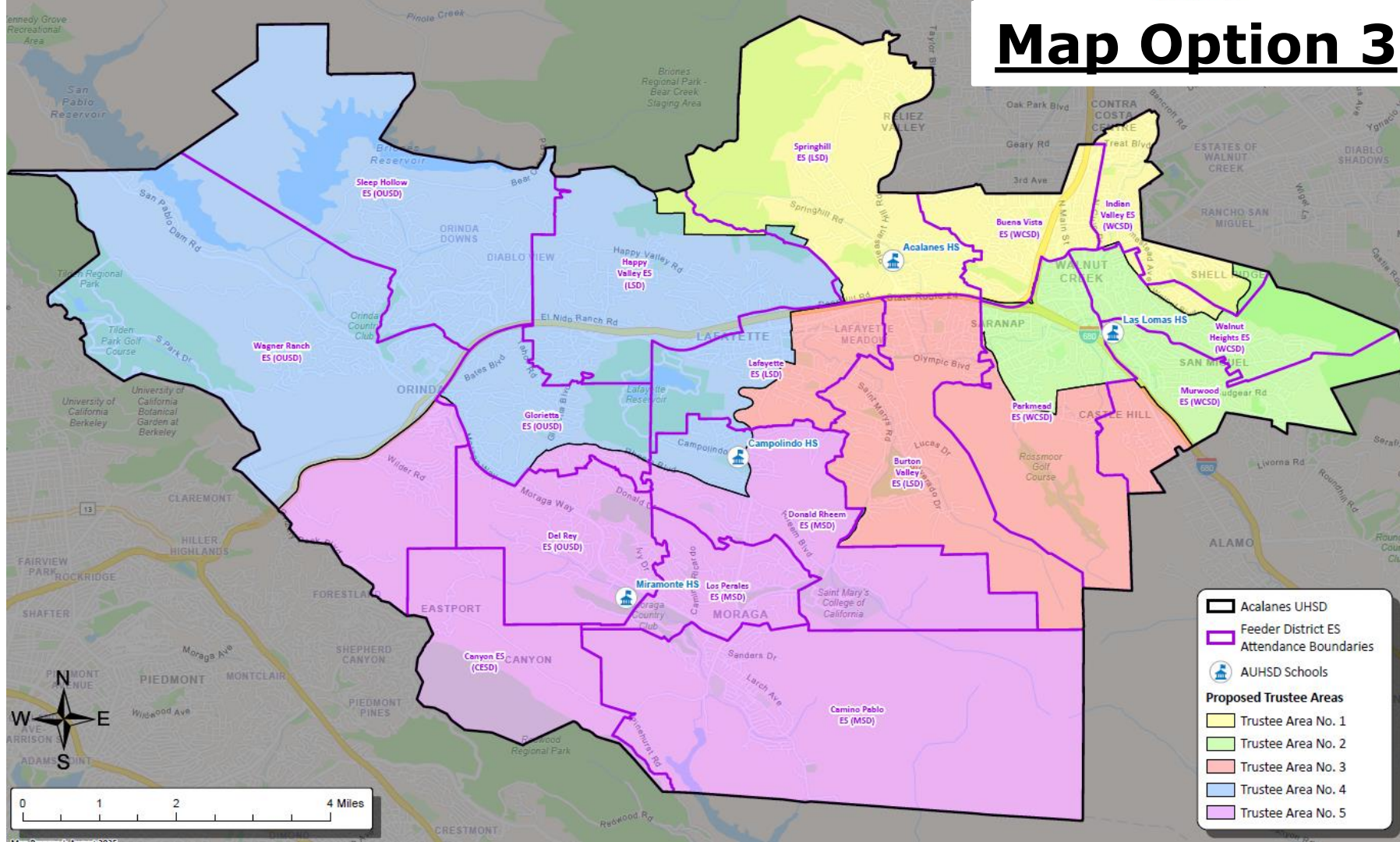
Map Option 3



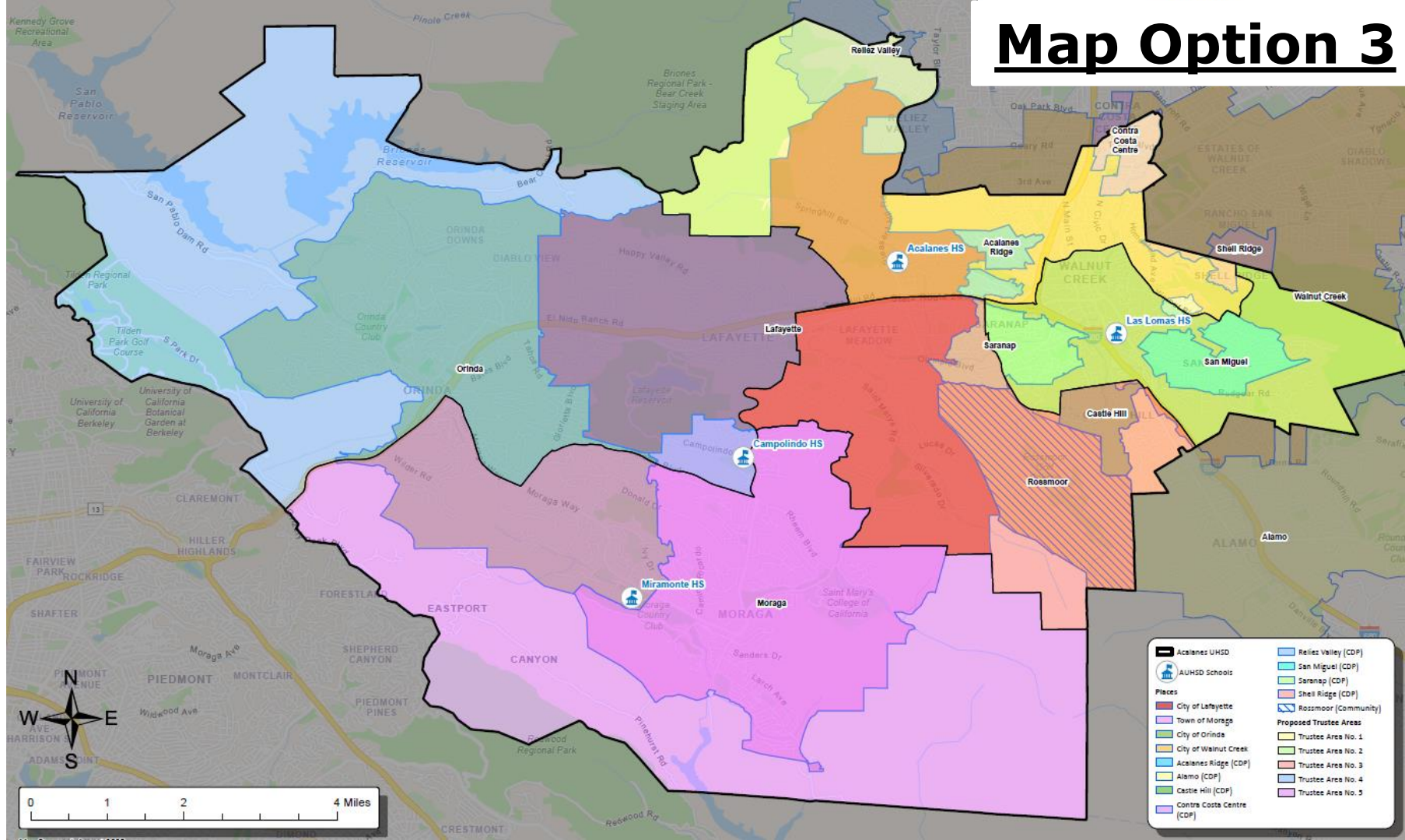
Map Option 3



Map Option 3



Map Option 3



Map 3 – Total Population Data



F3 Law

Total Population: 119,039		Ideal Population: 23,808		Variance: 7.9%	
Total Population (2020 Census)					
	Trustee Area 1	Trustee Area 2	Trustee Area 3	Trustee Area 4	Trustee Area 5
Population	23,800	24,379	24,244	24,108	22,508
Population Variance	-8	571	436	300	-1,300
	0.0%	2.4%	1.8%	1.3%	-5.5%
Hispanic/Latino	10.3%	12.2%	6.7%	7.2%	9.2%
White	62.0%	64.7%	74.0%	69.1%	62.2%
Black/ African American	2.3%	2.7%	0.8%	0.8%	1.3%
American Indian/ Alaska Native	0.1%	0.1%	0.0%	0.1%	0.1%
Asian	17.4%	13.3%	12.3%	15.0%	18.8%
Native Hawaiian/ Other Pacific Islander	0.1%	0.2%	0.1%	0.0%	0.2%
Other	0.9%	0.6%	0.5%	0.6%	0.6%
Two or More Races	6.8%	6.3%	5.5%	7.2%	7.6%

Map 3 – CVAP Data



Citizens by Voting Age Population Estimate (2019-2023)

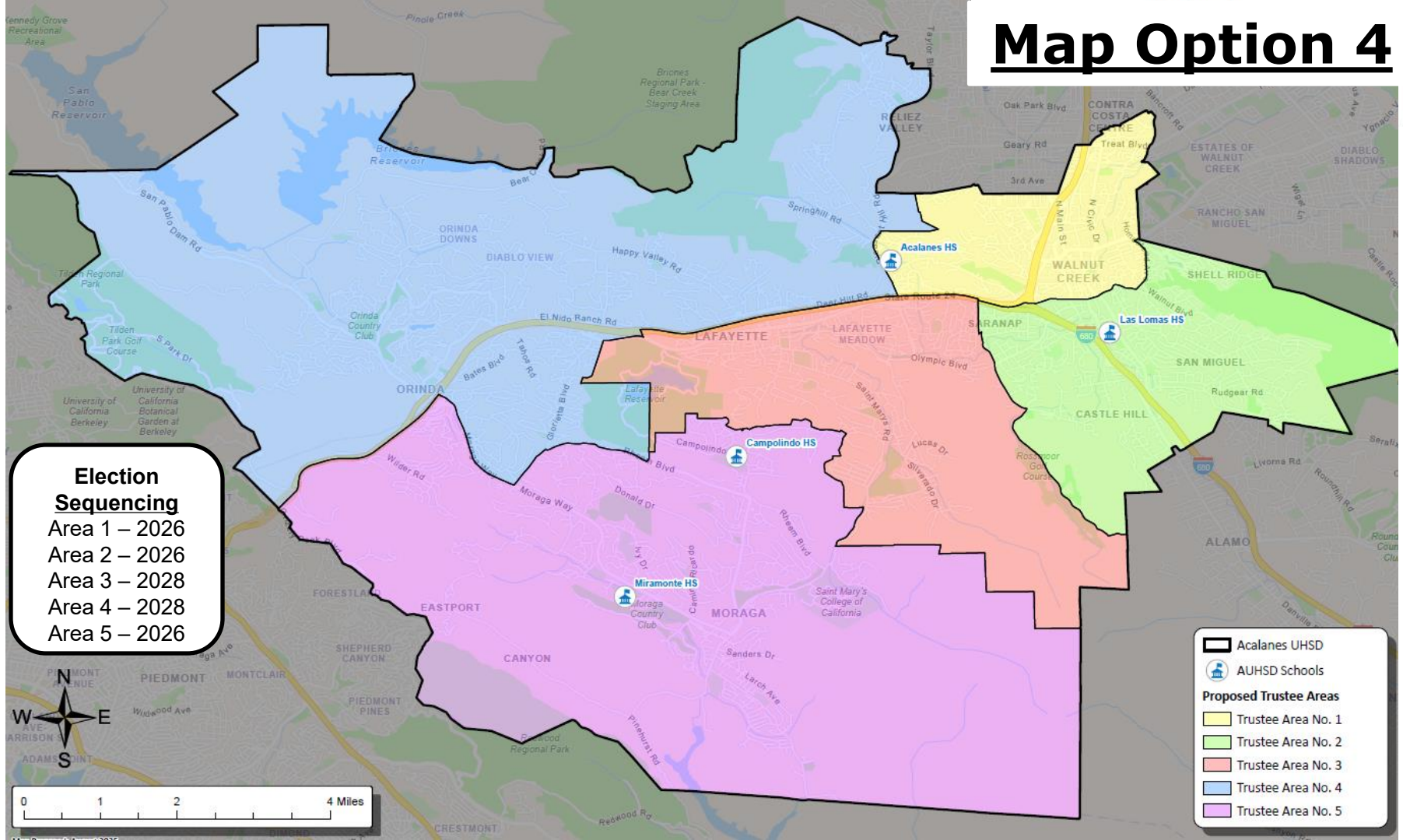
	Trustee Area 1	Trustee Area 2	Trustee Area 3	Trustee Area 4	Trustee Area 5
Population	17,543	18,902	18,477	16,867	15,782
Hispanic/Latino	12.3%	9.3%	4.3%	6.1%	9.6%
White	66.7%	72.6%	82.3%	76.5%	67.5%
Black/ African American	3.5%	2.5%	1.0%	0.9%	0.8%
American Indian/ Alaska Native	0.4%	0.0%	0.1%	0.0%	0.3%
Asian	12.8%	11.6%	9.9%	11.8%	18.4%
Native Hawaiian/ Other Pacific Islander	0.0%	0.1%	0.1%	0.0%	0.2%
Other	N/A	N/A	N/A	N/A	N/A
Two or More Races	4.2%	3.9%	2.3%	4.8%	3.2%

Map 3 – Income Data

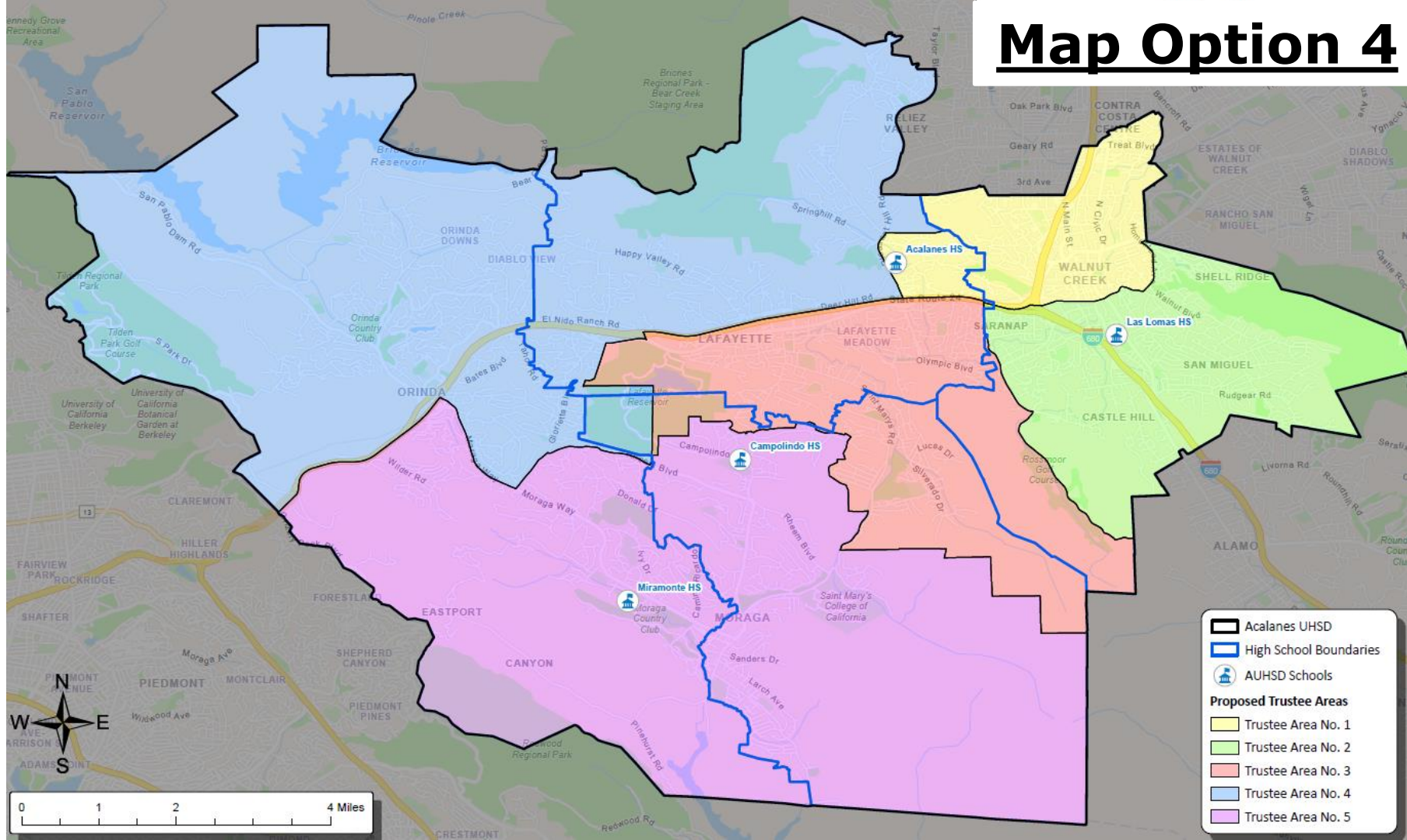


Household Income (2019-2023)					
	Trustee Area 1	Trustee Area 2	Trustee Area 3	Trustee Area 4	Trustee Area 5
Income Less Than \$20K	5.9%	4.8%	4.8%	5.5%	6.8%
Income \$20K - \$50K	9.9%	7.2%	10.6%	6.3%	5.3%
Income \$50K - \$75K	4.9%	8.5%	6.6%	5.7%	5.2%
Income \$75K - \$100K	6.3%	11.6%	9.7%	3.8%	5.5%
Income \$100K - \$200K	29.7%	34.4%	24.4%	20.9%	24.2%
Income Over \$200K	43.3%	33.5%	43.9%	57.8%	53.0%

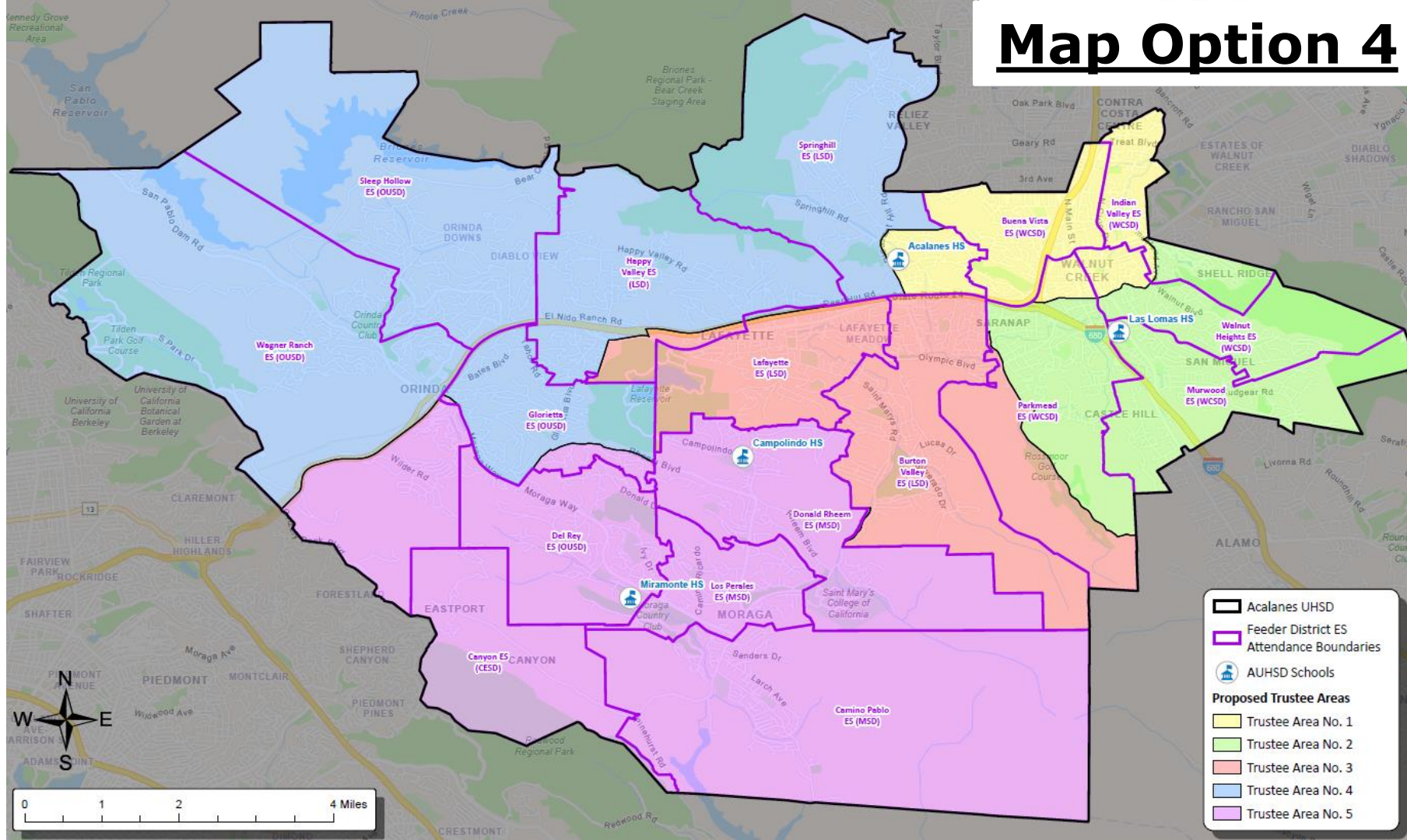
Map Option 4



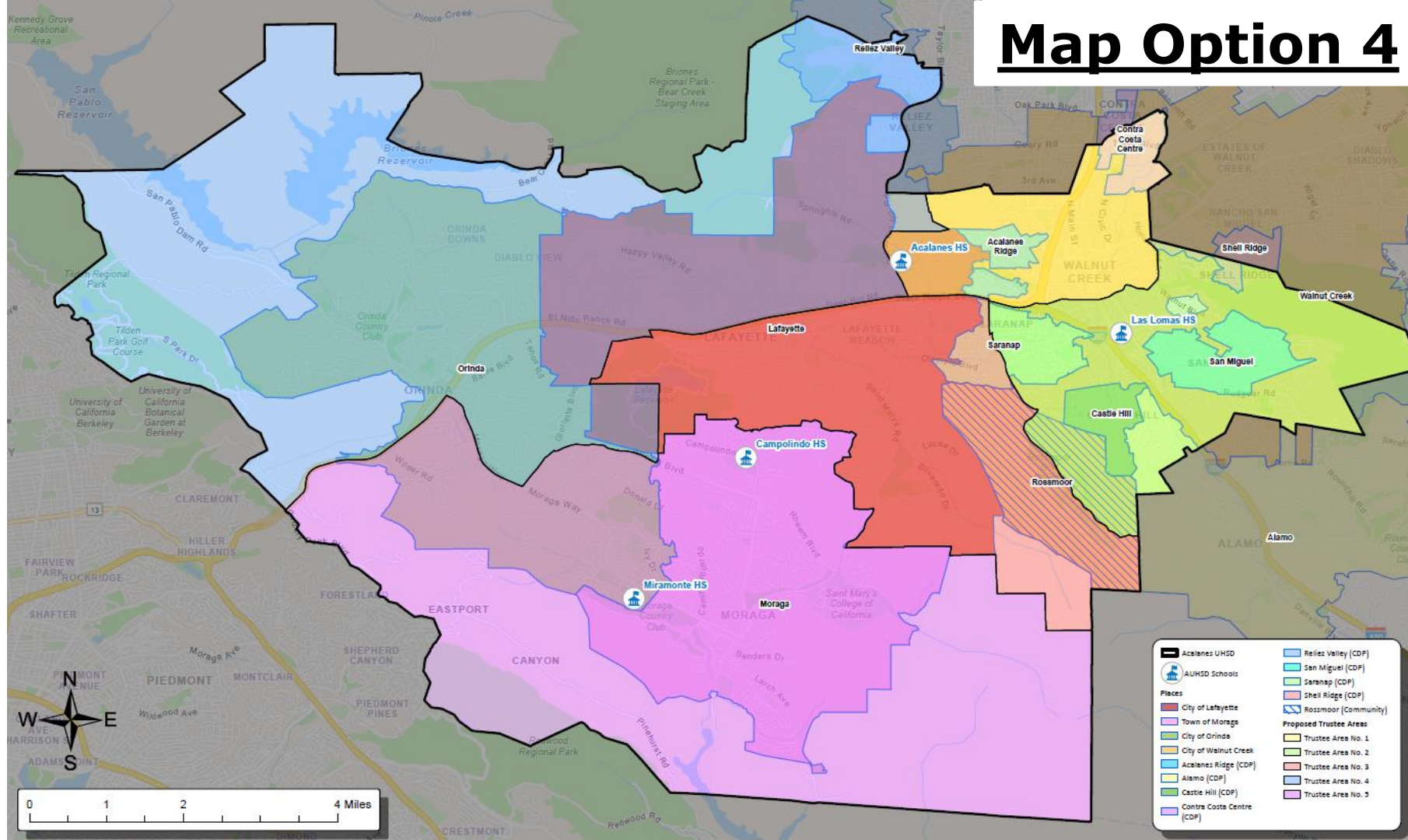
Map Option 4



Map Option 4



Map Option 4



- | | |
|---------------------------|-------------------------------|
| Acalanes UHSD | Reliez Valley (CDP) |
| AUHSD Schools | San Miguel (CDP) |
| Places | Saranap (CDP) |
| City of Lafayette | Shell Ridge (CDP) |
| Town of Moraga | Rossmoor (Community) |
| City of Orinda | Proposed Trustee Areas |
| City of Walnut Creek | Trustee Area No. 1 |
| Acalanes Ridge (CDP) | Trustee Area No. 2 |
| Alamo (CDP) | Trustee Area No. 3 |
| Castle Hill (CDP) | Trustee Area No. 4 |
| Contra Costa Centre (CDP) | Trustee Area No. 5 |

Map 4 – Total Population Data



F3 Law

Total Population:		119,039	Ideal Population:		23,808	Variance:		5.2%
Total Population (2020 Census)								
	Trustee Area 1	Trustee Area 2	Trustee Area 3	Trustee Area 4	Trustee Area 5			
Population	23,533	24,236	24,183	22,997	24,090			
Population Variance	-275	428	375	-811	282			
	-1.2%	1.8%	1.6%	-3.4%	1.2%			
Hispanic/Latino	12.5%	10.1%	7.5%	6.5%	9.0%			
White	57.8%	68.7%	72.5%	71.3%	62.3%			
Black/ African American	3.0%	2.1%	0.8%	0.7%	1.2%			
American Indian/ Alaska Native	0.1%	0.1%	0.1%	0.1%	0.1%			
Asian	18.8%	12.3%	12.6%	13.8%	19.0%			
Native Hawaiian/ Other Pacific Islander	0.2%	0.2%	0.1%	0.1%	0.2%			
Other	0.8%	0.6%	0.6%	0.5%	0.6%			
Two or More Races	6.7%	5.9%	5.9%	7.0%	7.7%			

Map 4 – CVAP Data



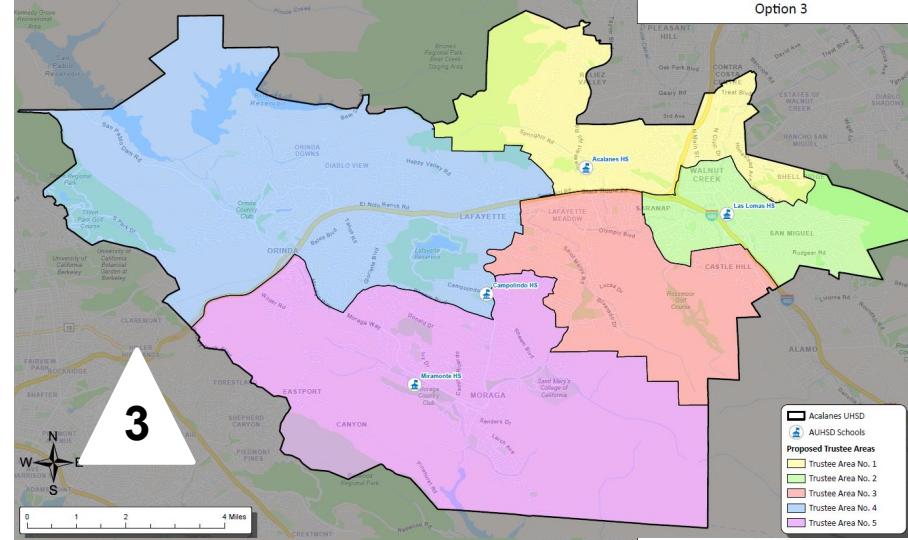
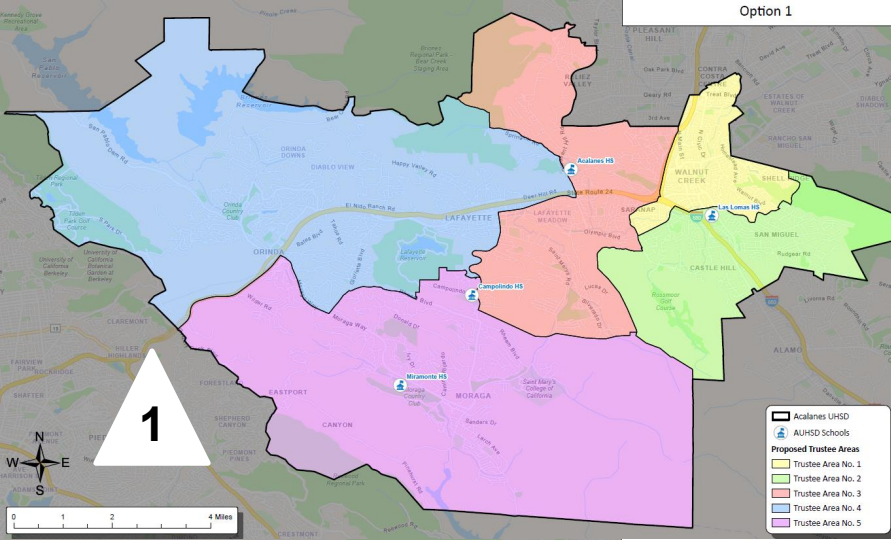
Citizens by Voting Age Population Estimate (2019-2023)					
	Trustee Area 1	Trustee Area 2	Trustee Area 3	Trustee Area 4	Trustee Area 5
Population	18,134	17,948	18,016	16,594	16,879
Hispanic/Latino	13.0%	8.3%	5.7%	5.0%	9.2%
White	65.3%	74.1%	79.7%	79.7%	67.9%
Black/ African American	3.6%	2.4%	1.3%	0.7%	0.7%
American Indian/ Alaska Native	0.4%	0.0%	0.1%	0.0%	0.3%
Asian	13.7%	11.0%	9.9%	10.9%	18.4%
Native Hawaiian/ Other Pacific Islander	0.1%	0.0%	0.1%	0.0%	0.2%
Other	N/A	N/A	N/A	N/A	N/A
Two or More Races	3.9%	4.1%	3.2%	3.7%	3.4%

Map 4 – Income Data

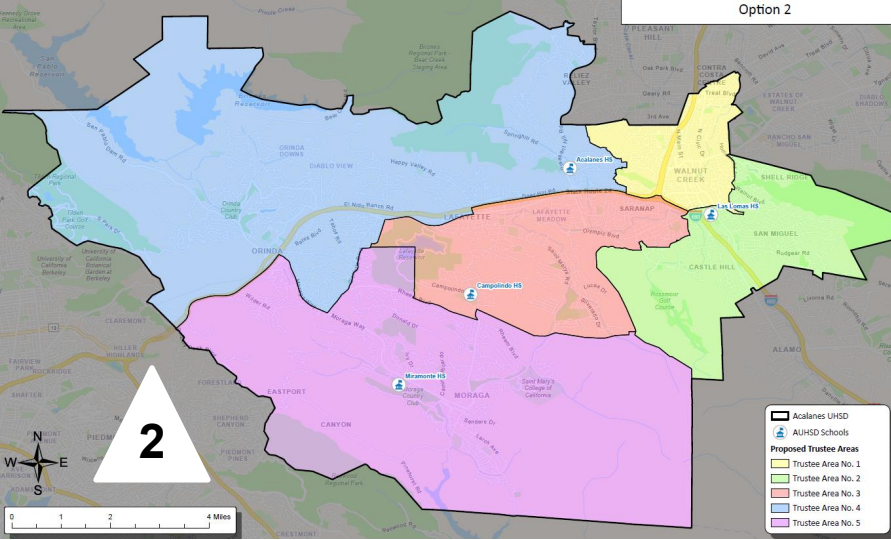


Household Income (2019-2023)					
	Trustee Area 1	Trustee Area 2	Trustee Area 3	Trustee Area 4	Trustee Area 5
Income Less Than \$20K	6.7%	3.9%	5.1%	5.3%	6.6%
Income \$20K - \$50K	11.5%	7.0%	10.6%	5.2%	5.3%
Income \$50K - \$75K	6.4%	7.8%	6.7%	4.7%	5.9%
Income \$75K - \$100K	9.5%	8.8%	9.1%	3.9%	5.6%
Income \$100K - \$200K	34.2%	30.7%	25.8%	19.4%	23.8%
Income Over \$200K	31.7%	41.7%	42.8%	61.5%	52.9%

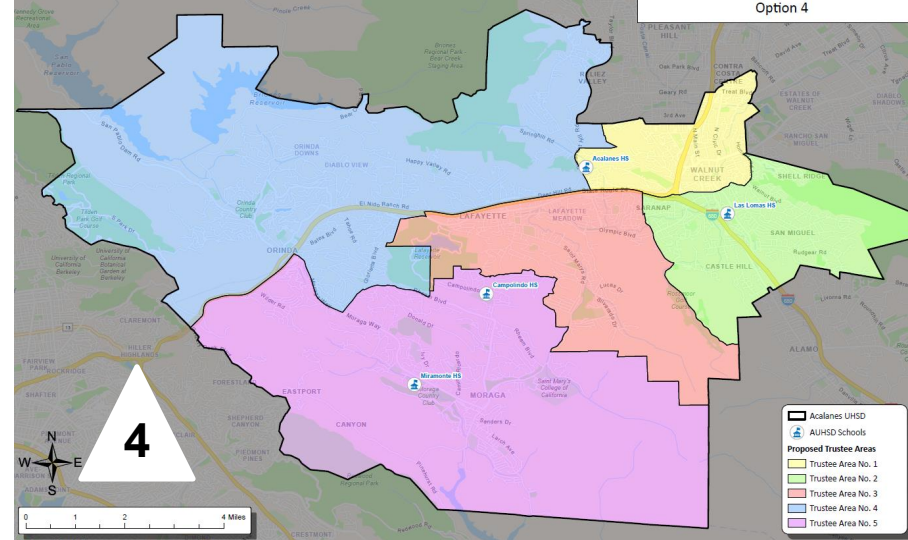
Option 1



Option 2



Option 4



Final Thoughts



- Does not change overall District boundaries
- Does not change school attendance boundaries
- **Does not** change how the District is governed:
 - Each Board member, regardless of the trustee area in which he/she resides, still owes fiduciary duty to entire District
 - Still one District with common goals and challenges!!!

Schedule

August 6, 2025	Pre-Map Public Hearing #1
August 20, 2025	Pre-Map Public Hearing #2
<i>Draft map options prepared by demographer</i>	
September 3, 2025	Map Public Hearing #1
September 17, 2025	Map Public Hearing #2
October 15, 2025	Map Public Hearing #3 / Map Adoption



Governing Board

- Governing Board Overview
- Transition to By-Trustee Area Election System
- Governing Board and District Goals
- AUHSD Governance Handbook 2024-2025
- Board Policies
- Board Meeting Dates
- Board Meeting Agendas
- Board Meeting Video Broadcast
- Awareness and Heritage Month Resolutions

[Home](#) > [District](#) > [Governing Board](#) > Transition to By-Trustee Area Election System

September 3 - Draft Map Public Hearing #1

[September 3 - Map Public Hearing #1 Notification](#)

[September 3 Presentation](#)

[September 3 Map Public Hearing #1 Streaming](#)

Draft Trustee Area Maps - Options 1 - 4

Draft Trustee Area Map Options 1 - 4 will be considered by the Governing Board. Page two overlays our high school attendance boundaries; page three overlays our partner elementary school attendance boundaries; and page four overlays cities and census-designated places (CDPs). Page five provides demographic data for the draft map.

 [DRAFT Trustee Area Map - Option 1](#)

 [DRAFT Trustee Area Map - Option 2](#)

 [DRAFT Trustee Area Map - Option 3](#)

 [DRAFT Trustee Area Map - Option 4](#)

 [AUHSD Election Sequencing - Draft Map Options 1 - 4](#)

Election sequencing indicates when each trustee area would have an election for each of the draft map options.

[This link will take viewers to an interactive map tool.](#) The tool allows users to search for addresses, zoom in, click on multiple maps at the same time to see the differences, and overlay either high school boundaries, elementary school boundaries, and city/census-designated places (CDPs) boundaries.

[Live Feedback Opportunities \(Prior to Creation of Map Options\)](#)


Date	Place*	Time**
Wednesday, August 6, 2025 <i>Public Hearing - COMPLETE Regular Governing Board Meeting</i>	Acalanes Union High School District Office Community Room 1212 Pleasant Hill Road Lafayette, CA 94549	7:05 p.m.
Wednesday, August 20, 2025 <i>Public Hearing - COMPLETE Special Governing Board Meeting</i>	Acalanes Union High School District Office Community Room 1212 Pleasant Hill Road Lafayette, CA 94549	7:05 p.m.

[Live Feedback Opportunities \(After Creation of Map Options\)](#)


Date	Place*	Time**
Wednesday, September 3, 2025	Acalanes Union High School	7:45 p.m.

Interactive Map Tool

Acalanes UHSD Boundary



AUHS D Schools



Option 1

Proposed Trustee Areas

Trustee Area No. 1

Trustee Area No. 2

Trustee Area No. 3

Trustee Area No. 4

Trustee Area No. 5

☒

Acalanes UHSD Boundary

☒

High School Attendance Boundaries

☐

Feeder District Boundaries

☐

Feeder District Attendance Boundaries

☒

AUHS D Schools

☐

Option 1

☒

Option 2

☐

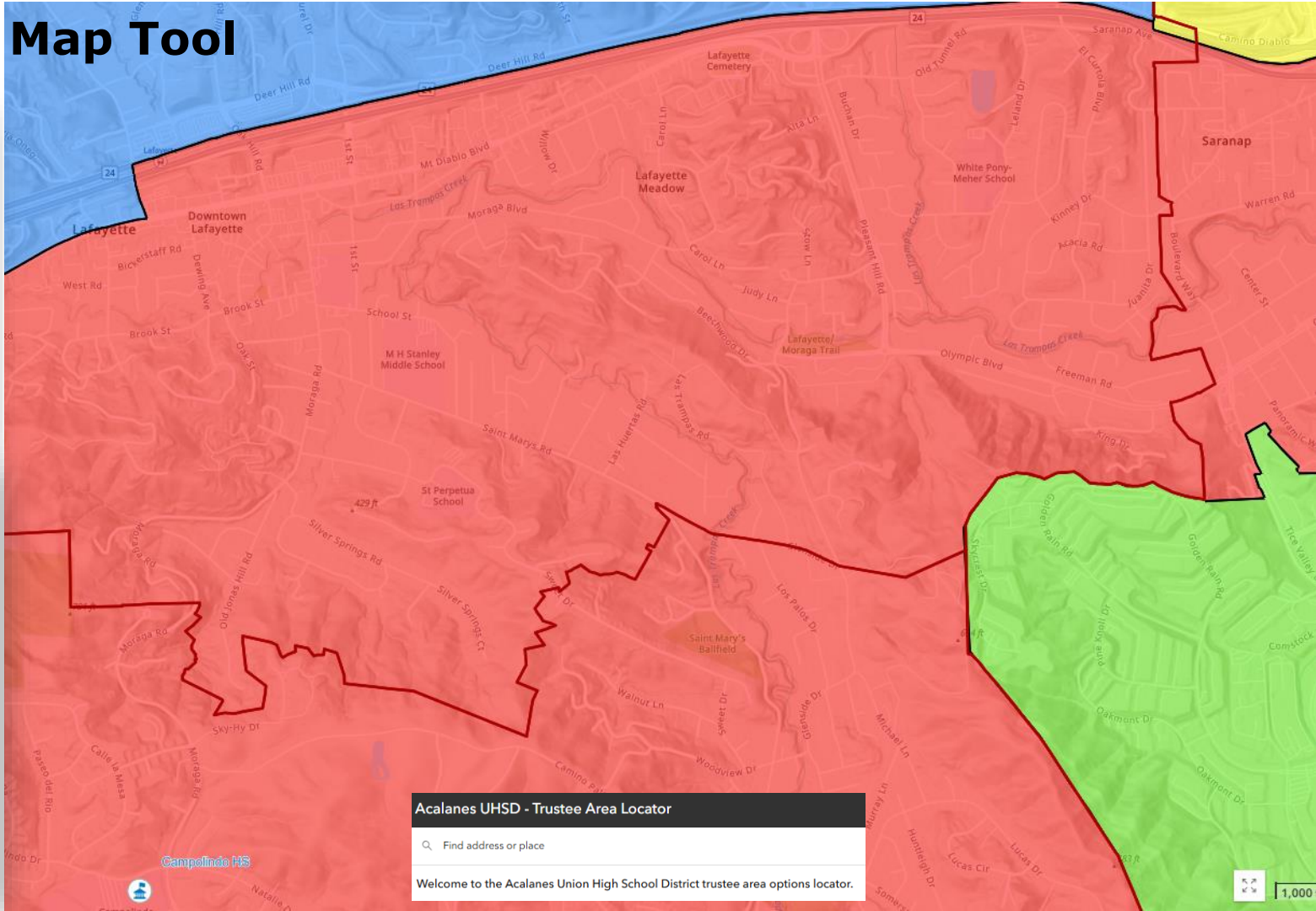
Option 3

☐

Option 4

☐

Places and Communities



Acalanes UHSD - Trustee Area Locator

Find address or place

Welcome to the Acalanes Union High School District trustee area options locator.



1,000





BUSINESS & FACILITIES
CHARTER SCHOOLS
eMATTERS
GOVERNANCE & LEADERSHIP
HIGHER EDUCATION
LABOR & EMPLOYMENT
LITIGATION
STUDENT SERVICES & SPECIAL EDUCATION

F3Law.com

Fresno | Los Angeles | Oakland | Inland Empire | Sacramento | San Diego